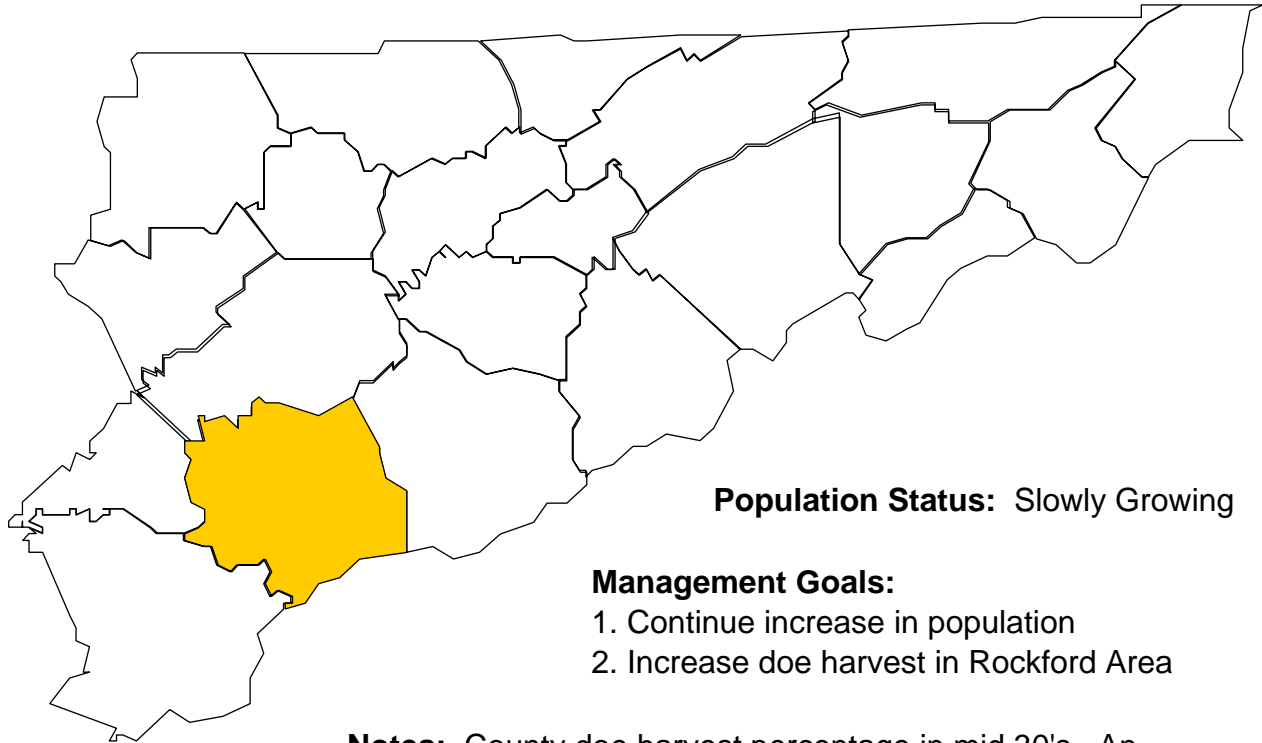


# Deer Harvests in Blount County

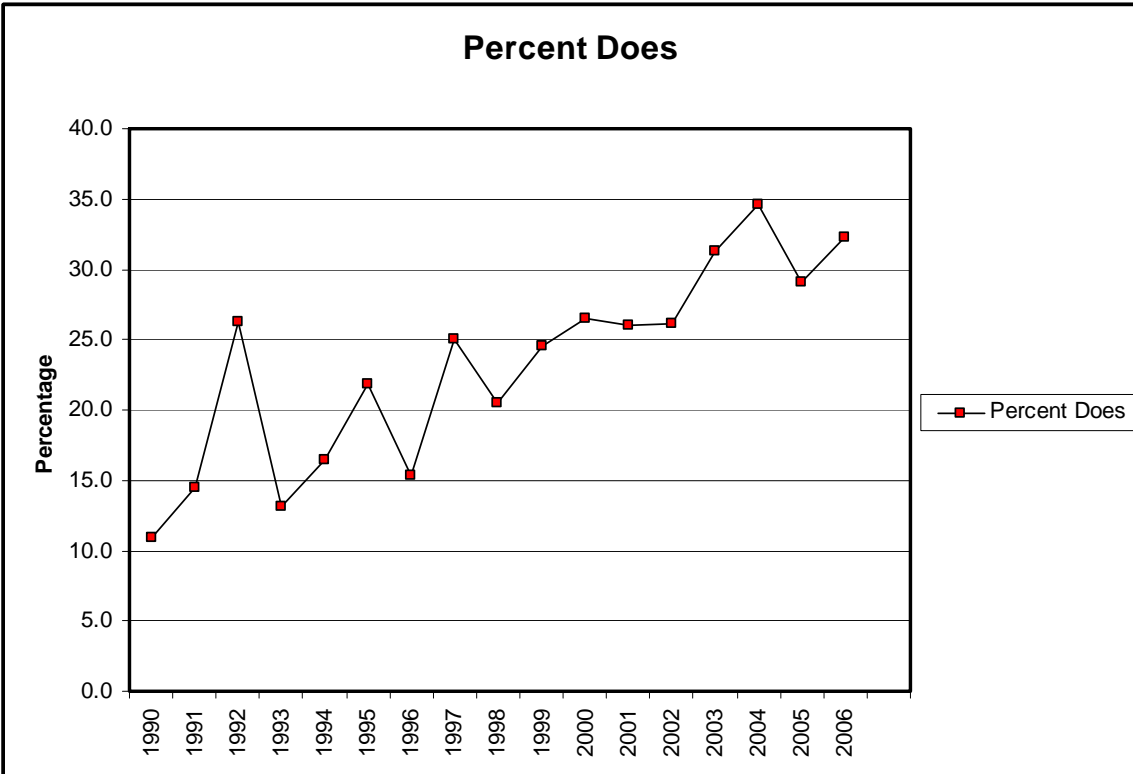
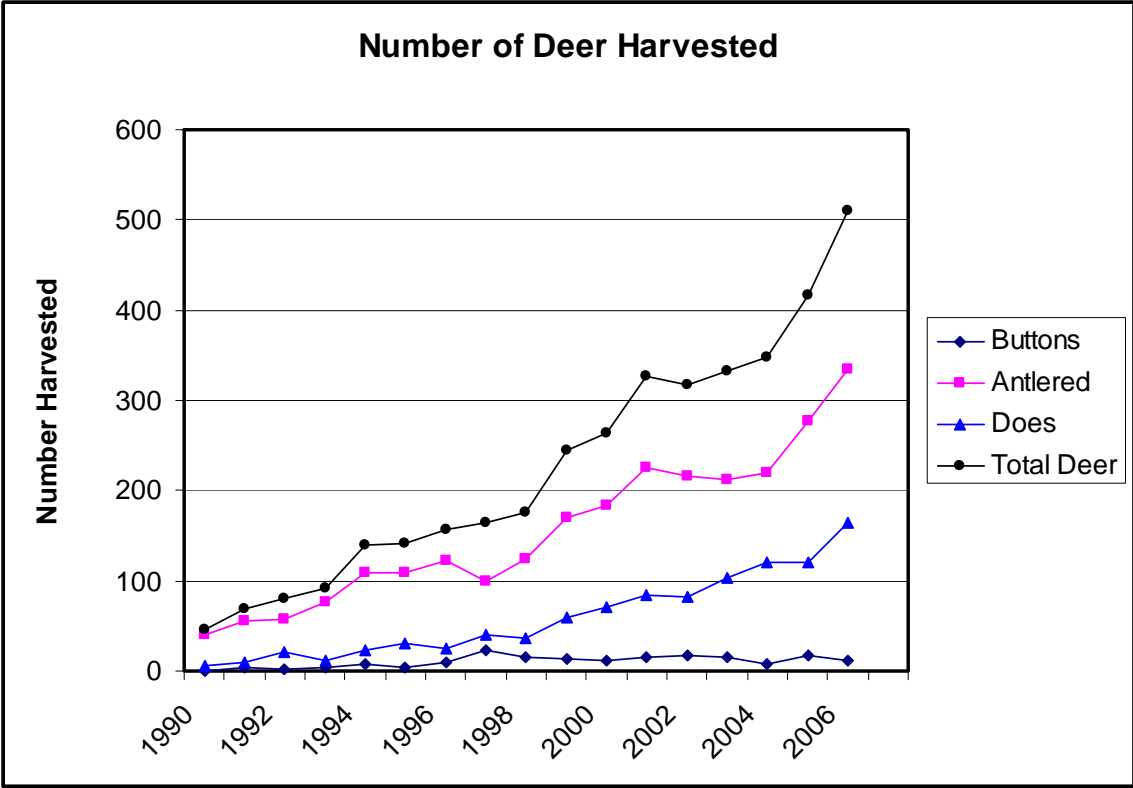


**Population Status:** Slowly Growing

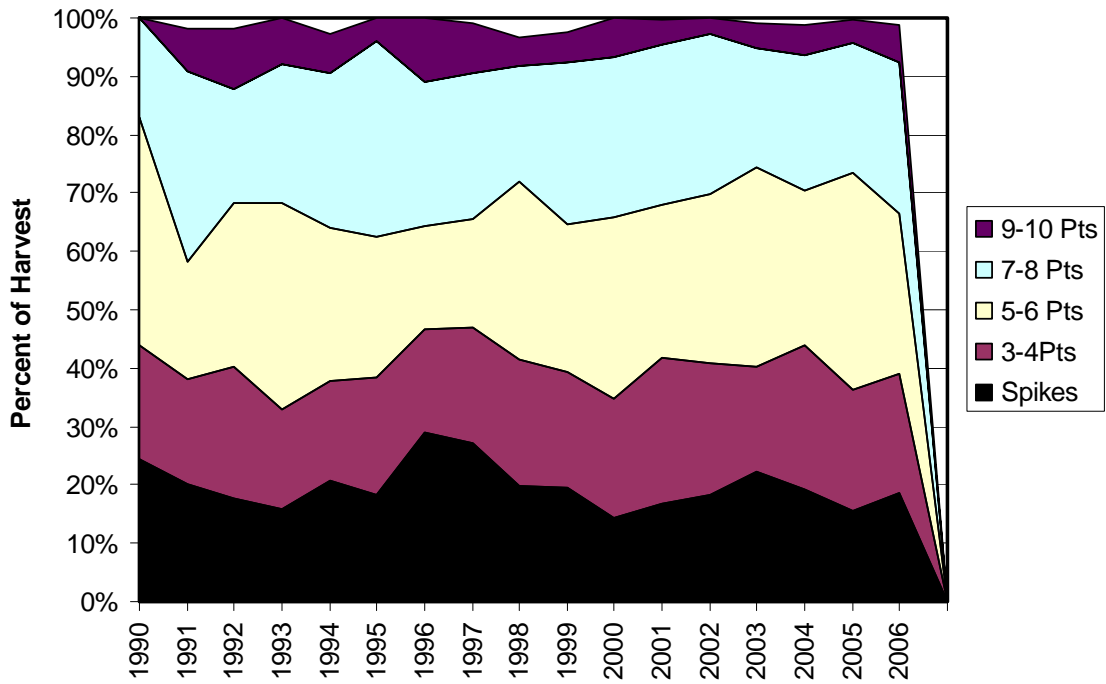
**Management Goals:**

1. Continue increase in population
2. Increase doe harvest in Rockford Area

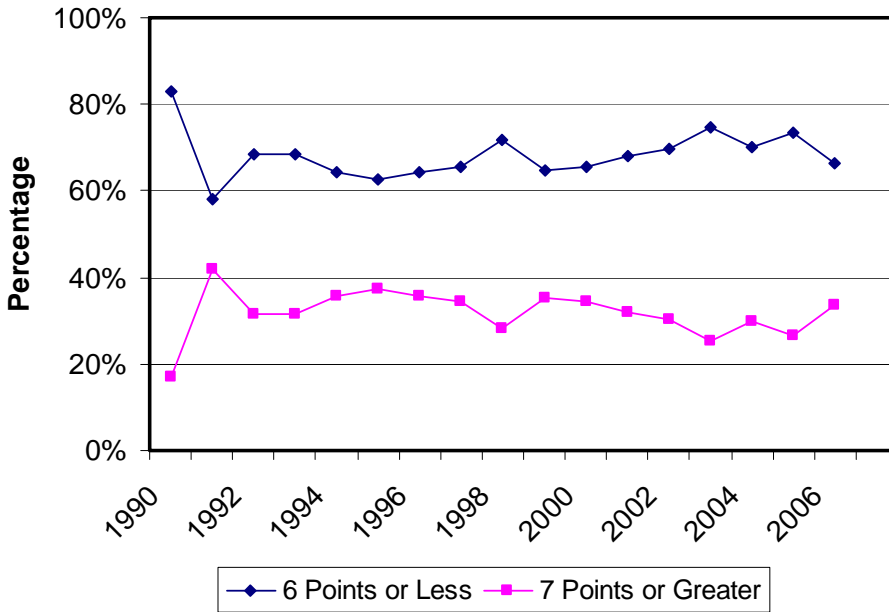
**Notes:** County doe harvest percentage in mid 30's. An increase above this could result in a decline of the population. The quota hunt is specific to Rockford area due to limited access for hunters. This hunt allows hunters with access to property in this area to have an opportunity to harvest does. This harvest, in turn, will assist with controlling herd growth in this area.



### Antler Point Comparison



### Percent Antler Points



### Number of Antler Points

