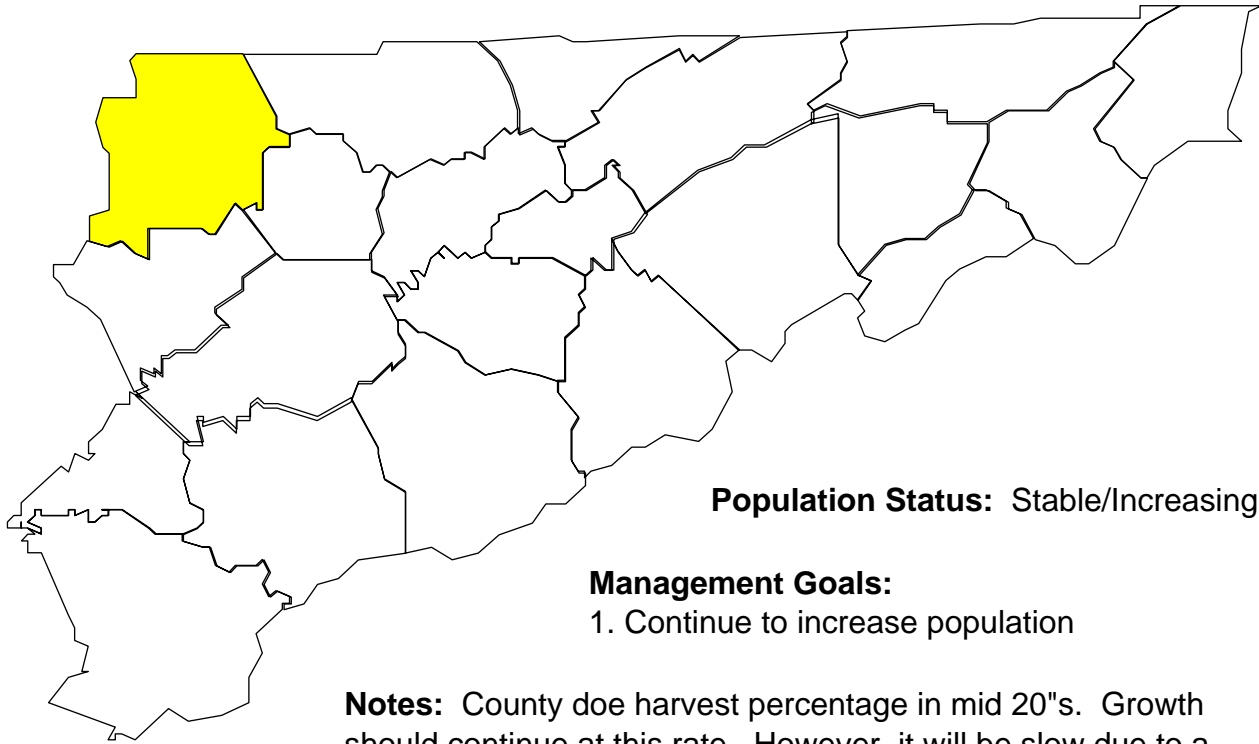


# Deer Harvests in Campbell County

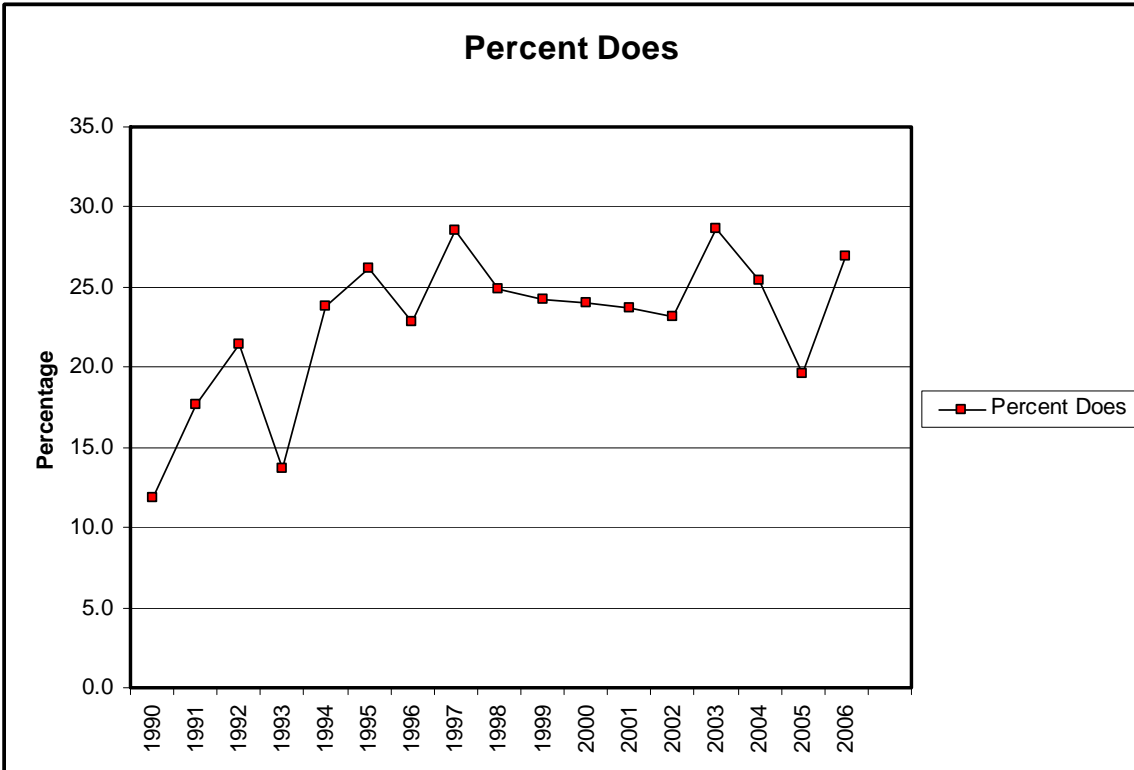
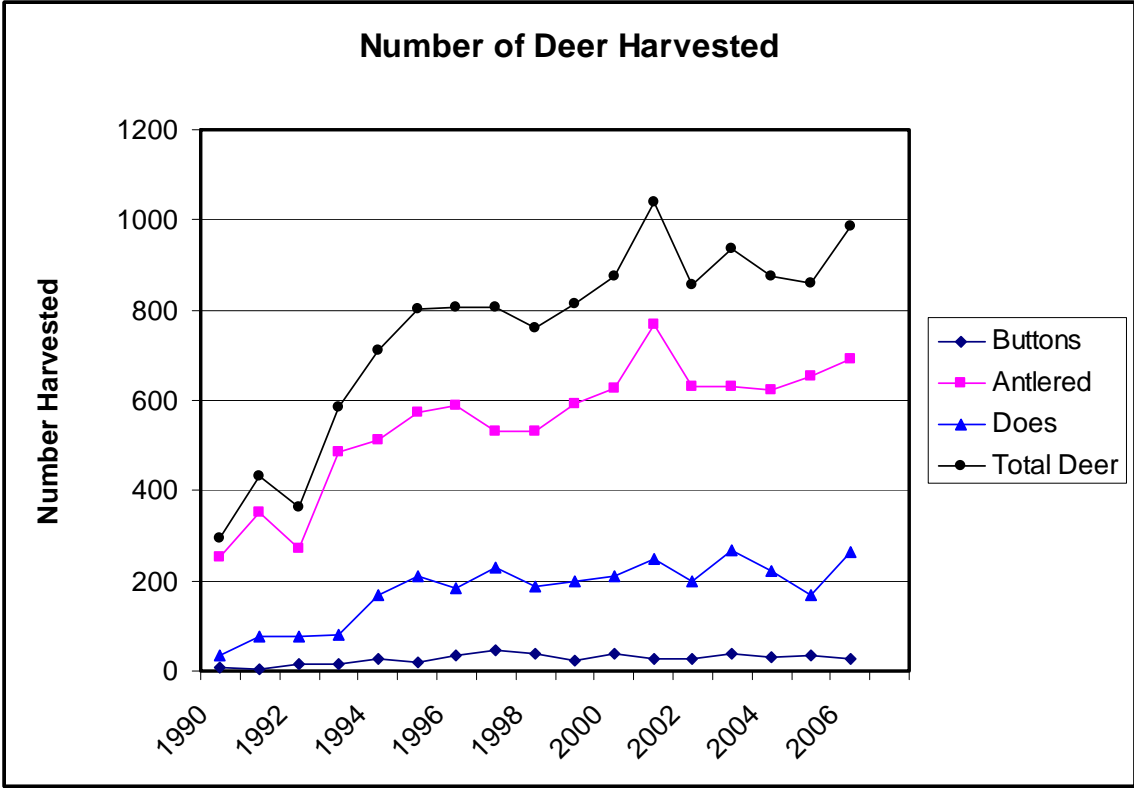


**Population Status:** Stable/Increasing

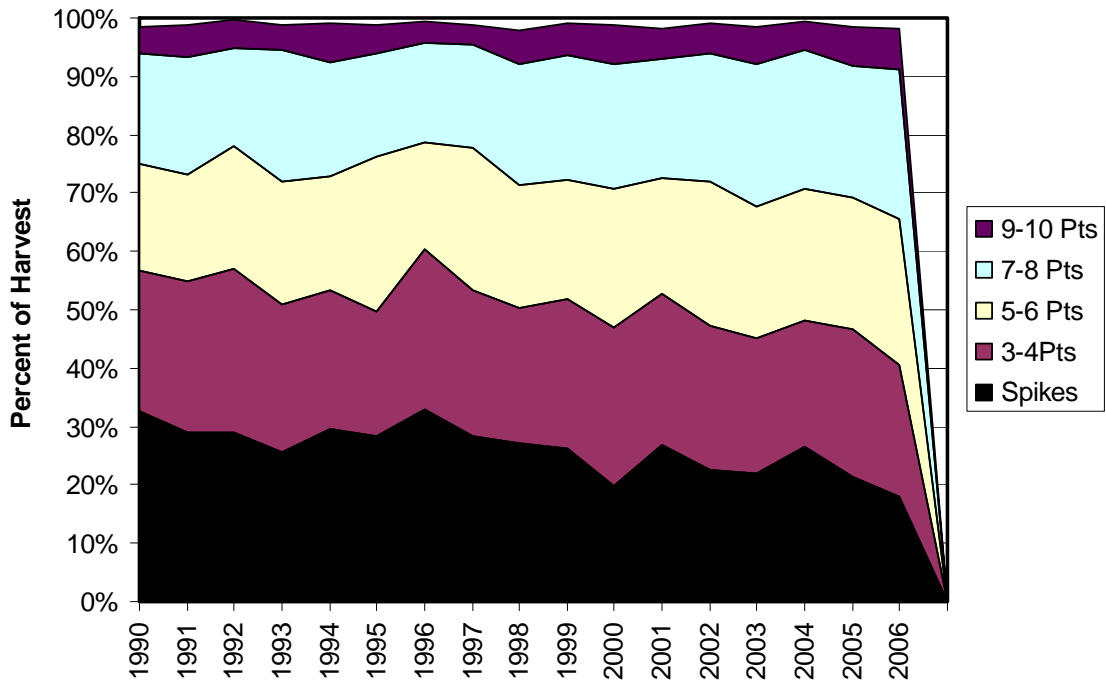
**Management Goals:**

1. Continue to increase population

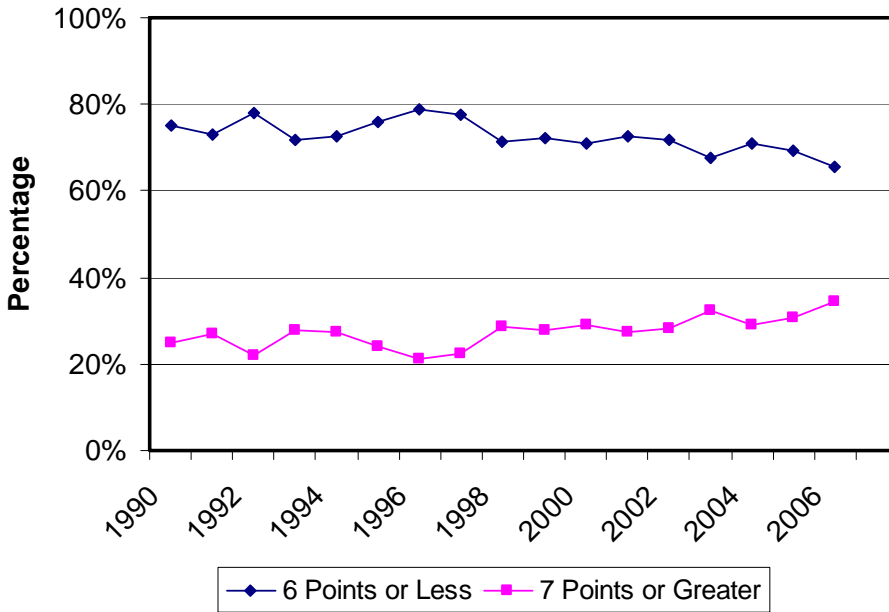
**Notes:** County doe harvest percentage in mid 20"s. Growth should continue at this rate. However, it will be slow due to a habitat quality in portions of the county.



### Antler Point Comparison



### Percent Antler Points



### Number of Antler Points

