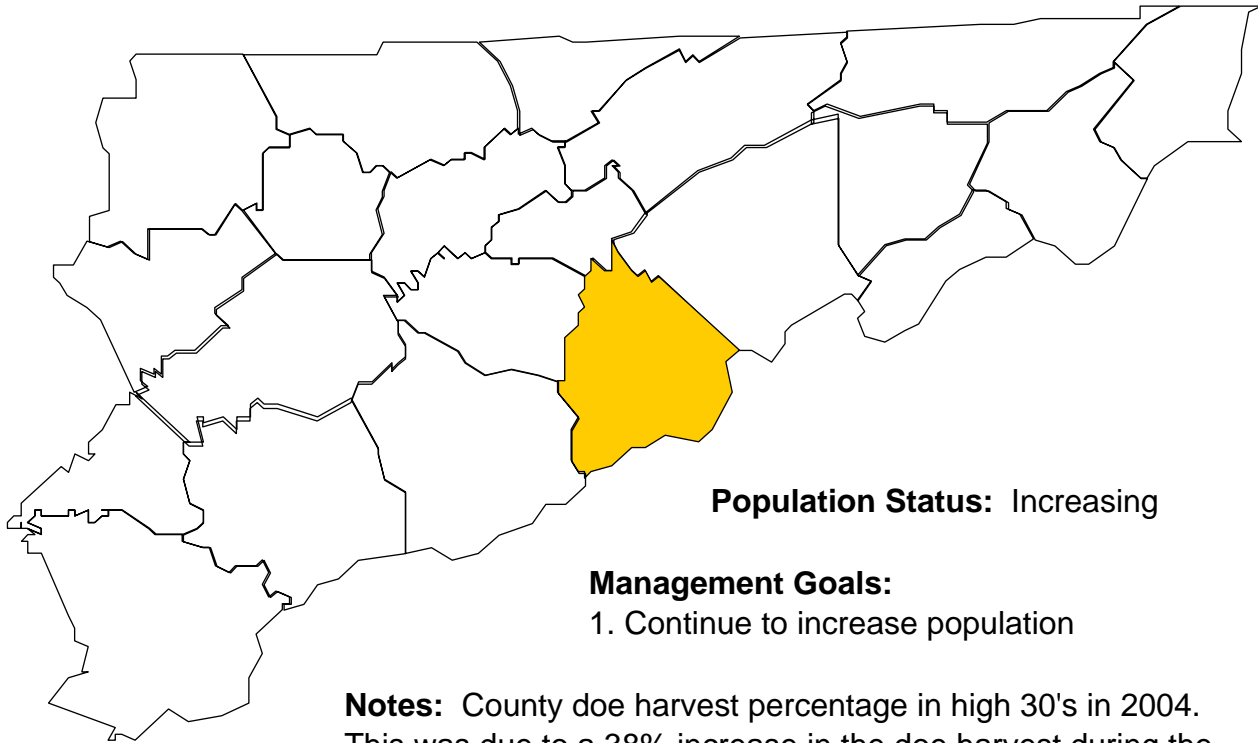


Deer Harvests in Cocke County



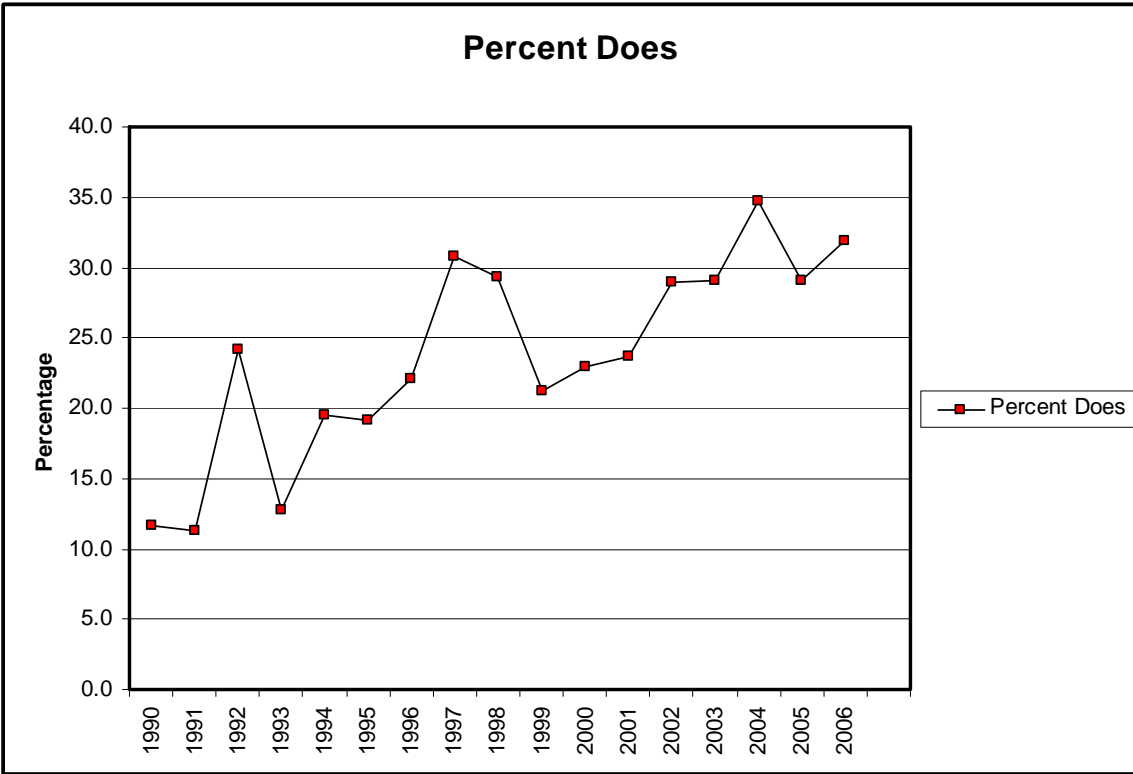
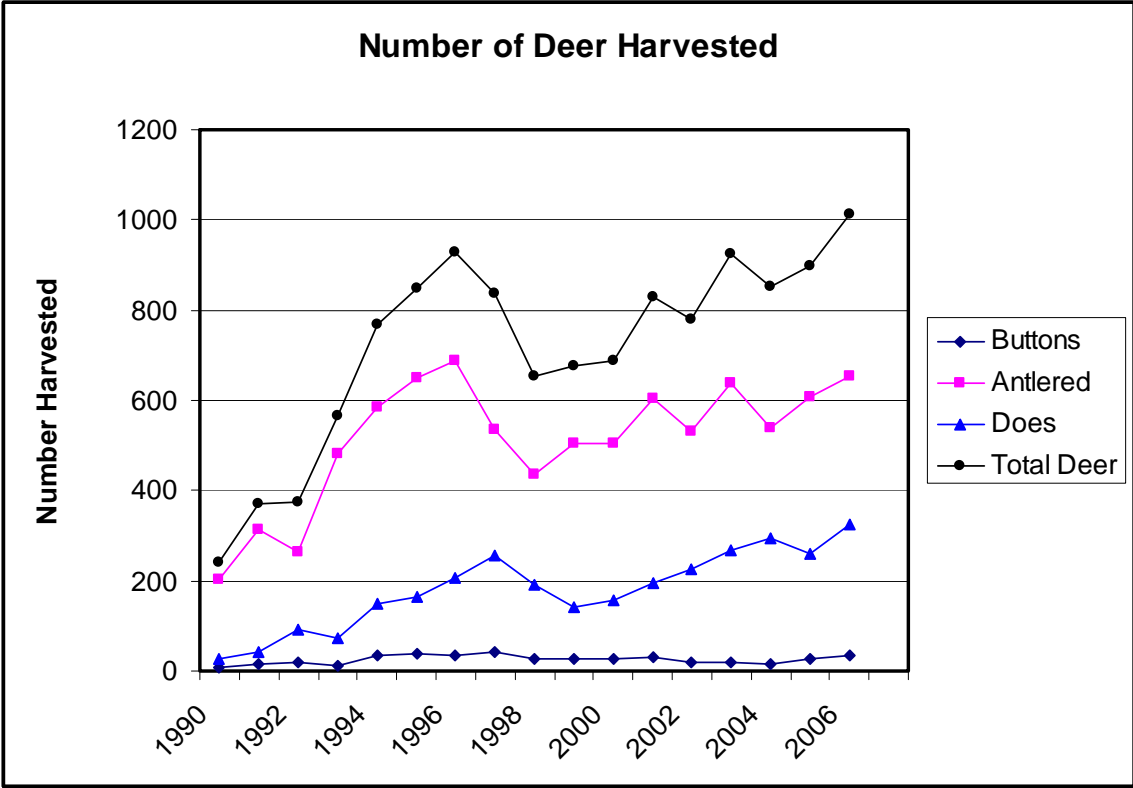
Population Status: Increasing

Management Goals:

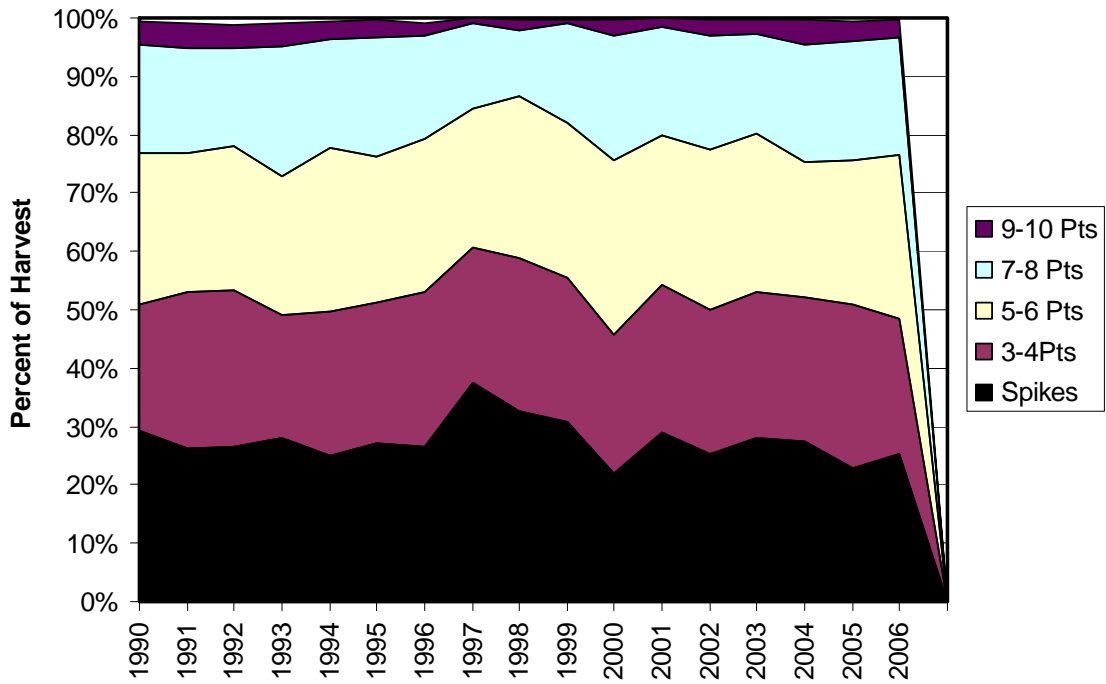
1. Continue to increase population

Notes: County doe harvest percentage in high 30's in 2004.

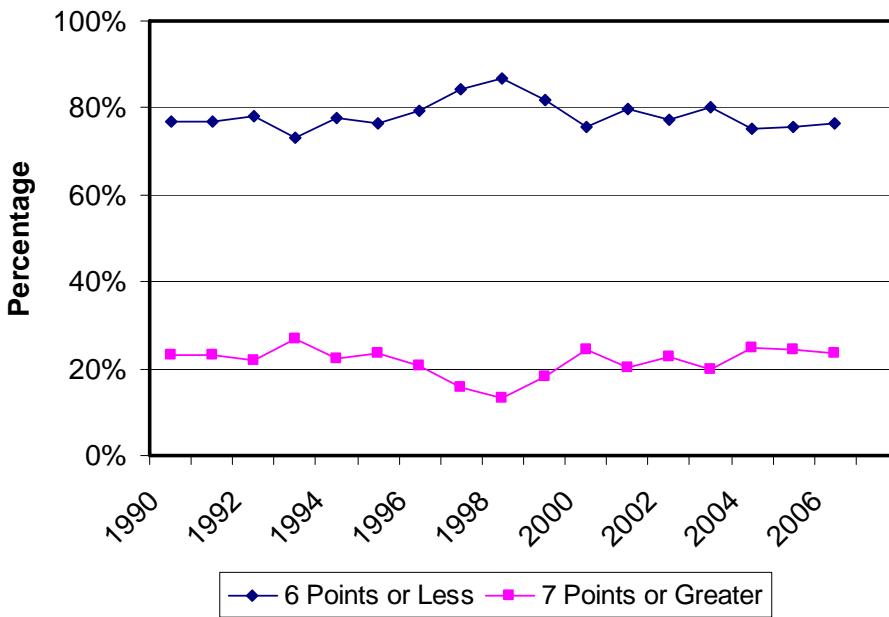
This was due to a 38% increase in the doe harvest during the muzzleloader season. Continued doe harvest at this rate could result in the stabilization or a decline of the population. Despite limiting habitat quality in the mountains, population continues to grow.



Antler Point Comparison



Percent Antler Points



Number of Antler Points

