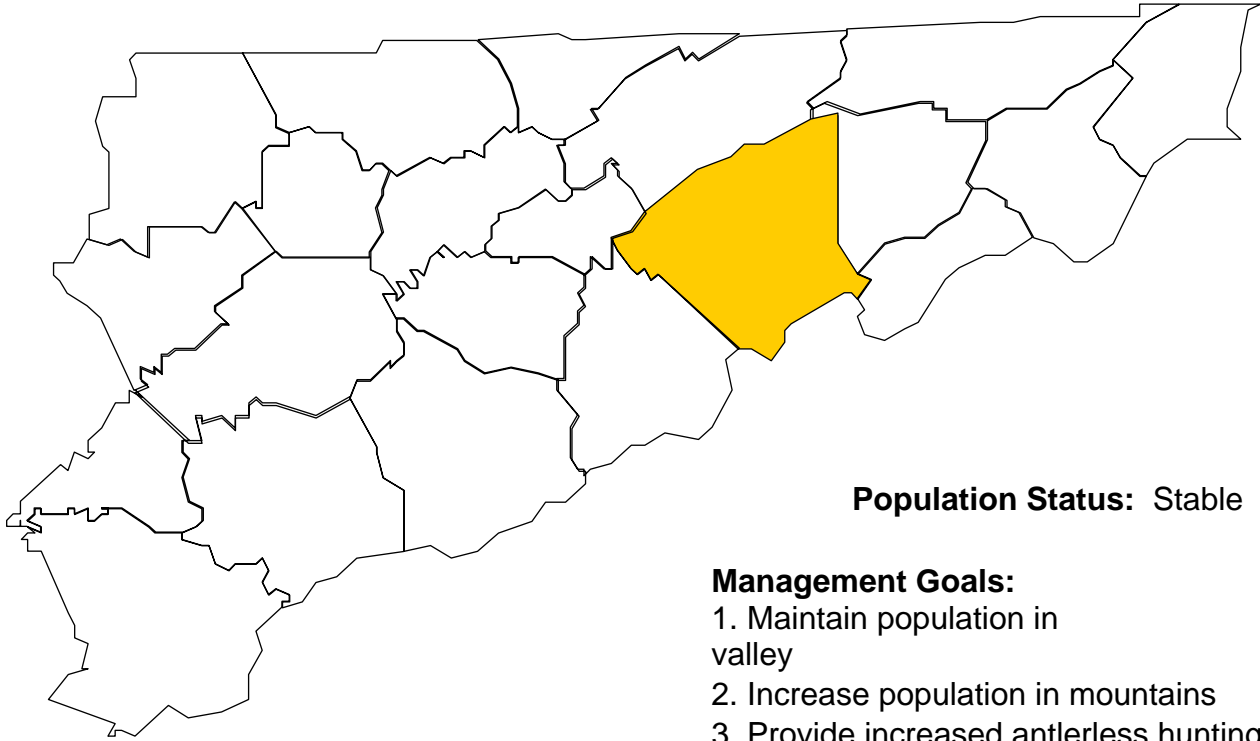


Deer Harvests in Greene County

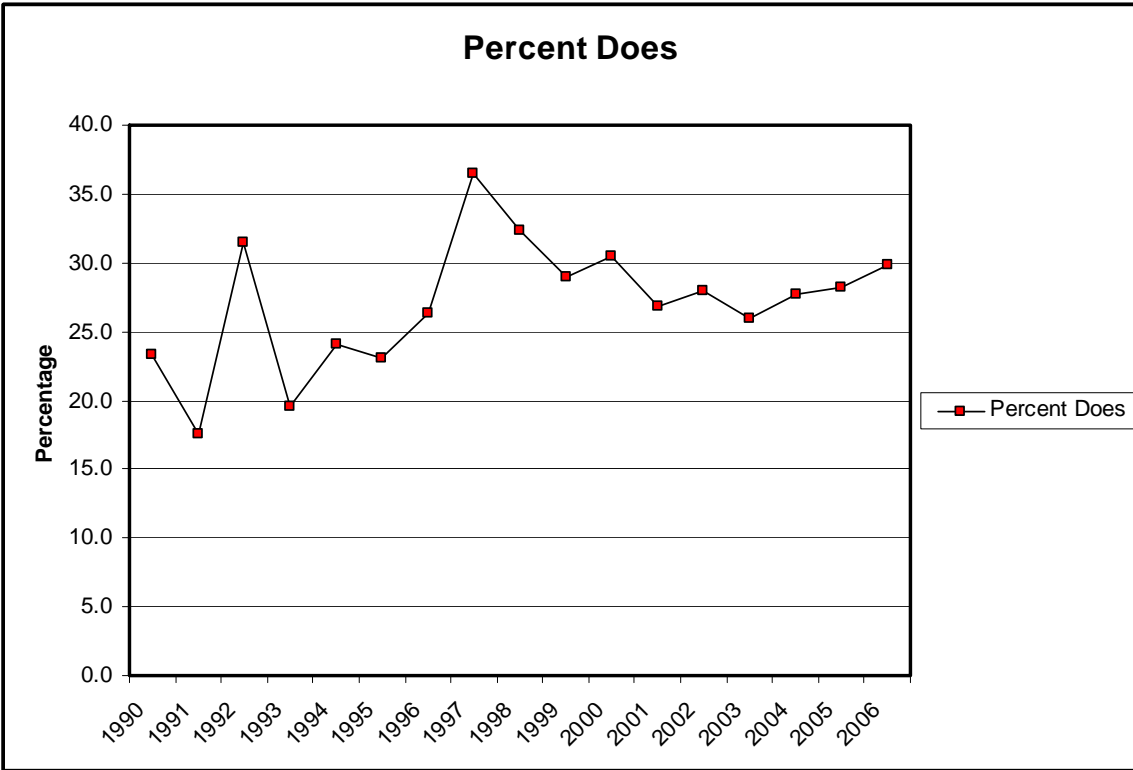
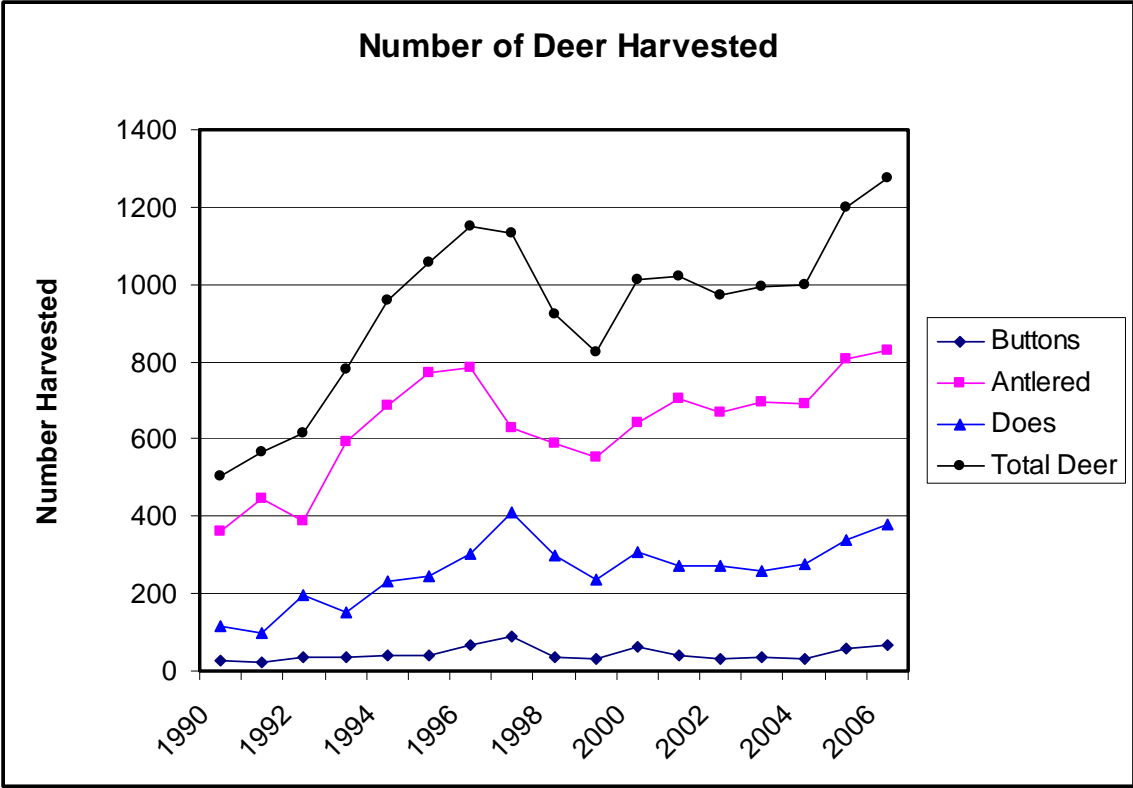


Population Status: Stable

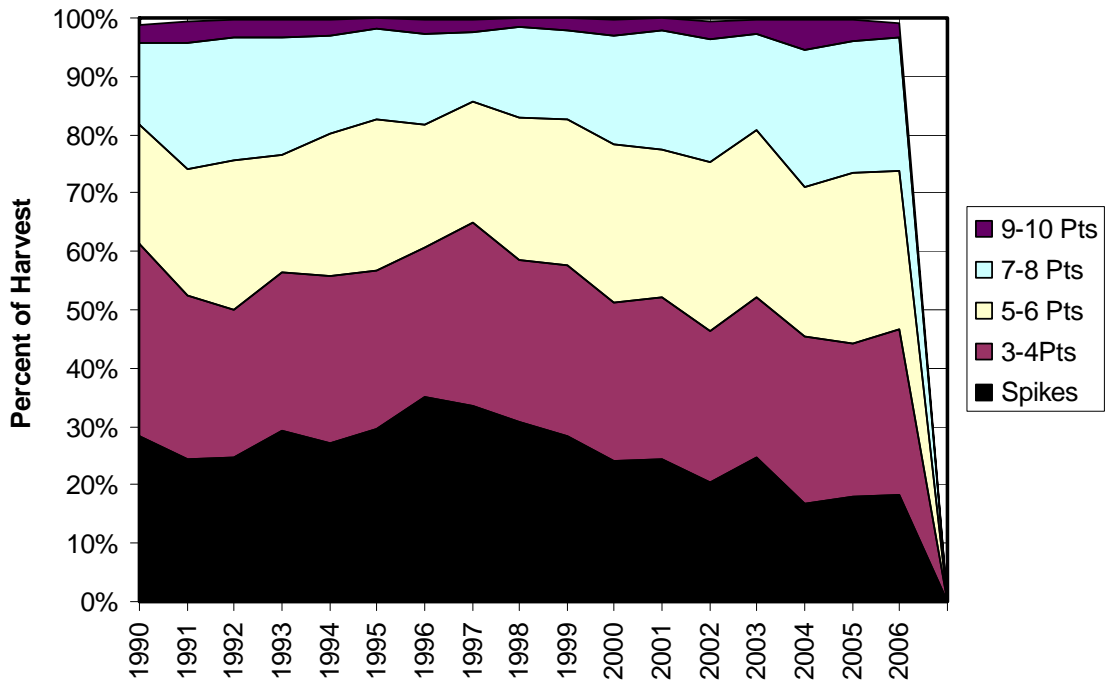
Management Goals:

1. Maintain population in valley
2. Increase population in mountains
3. Provide increased antlerless hunting opportunity in the valley

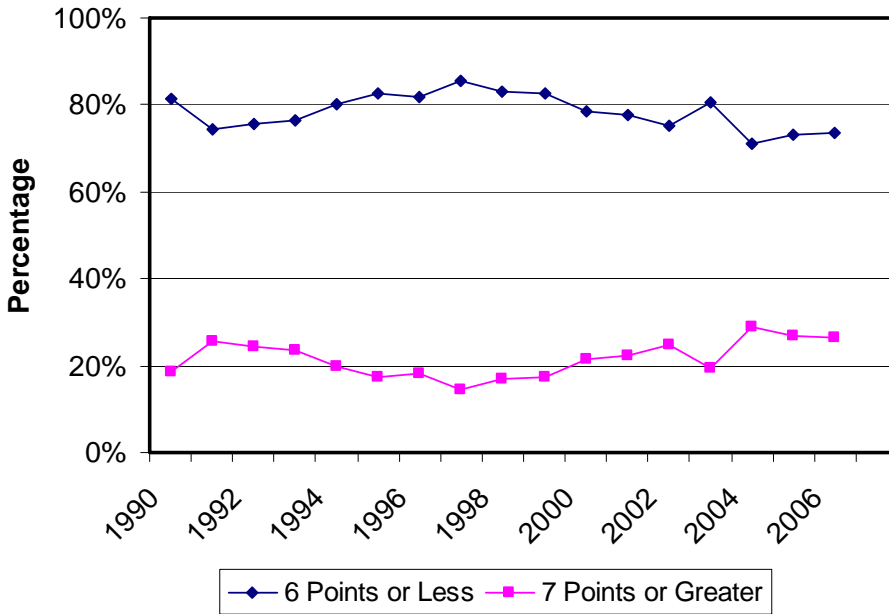
Notes: County doe harvest percentage in high-20's. Managing 2 populations within the county. Mountain populations declining due to habitat quality. Populations in the valley increasing. Quota hunt of 100 permits implemented for 2005. Permits limited to valley area. This will provide limited antlerless opportunities without impacting the population.



Antler Point Comparison



Percent Antler Points



Number of Antler Points

