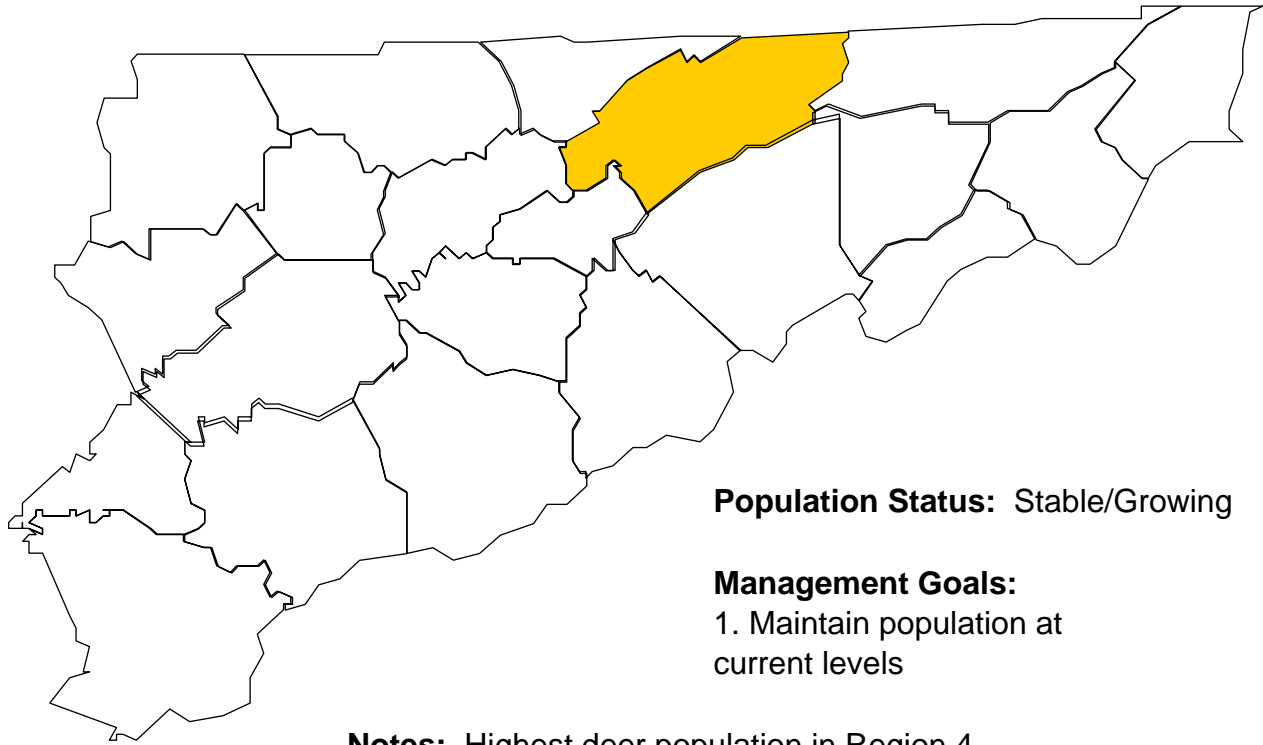


# Deer Harvests in Hawkins County



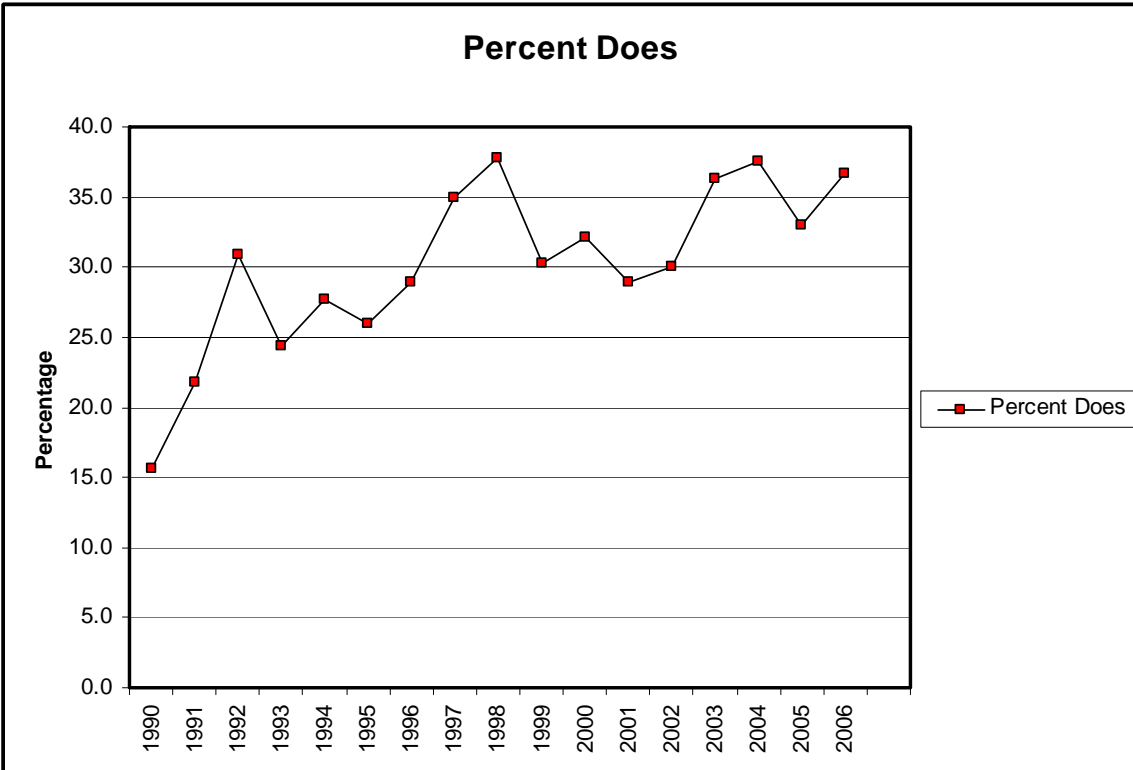
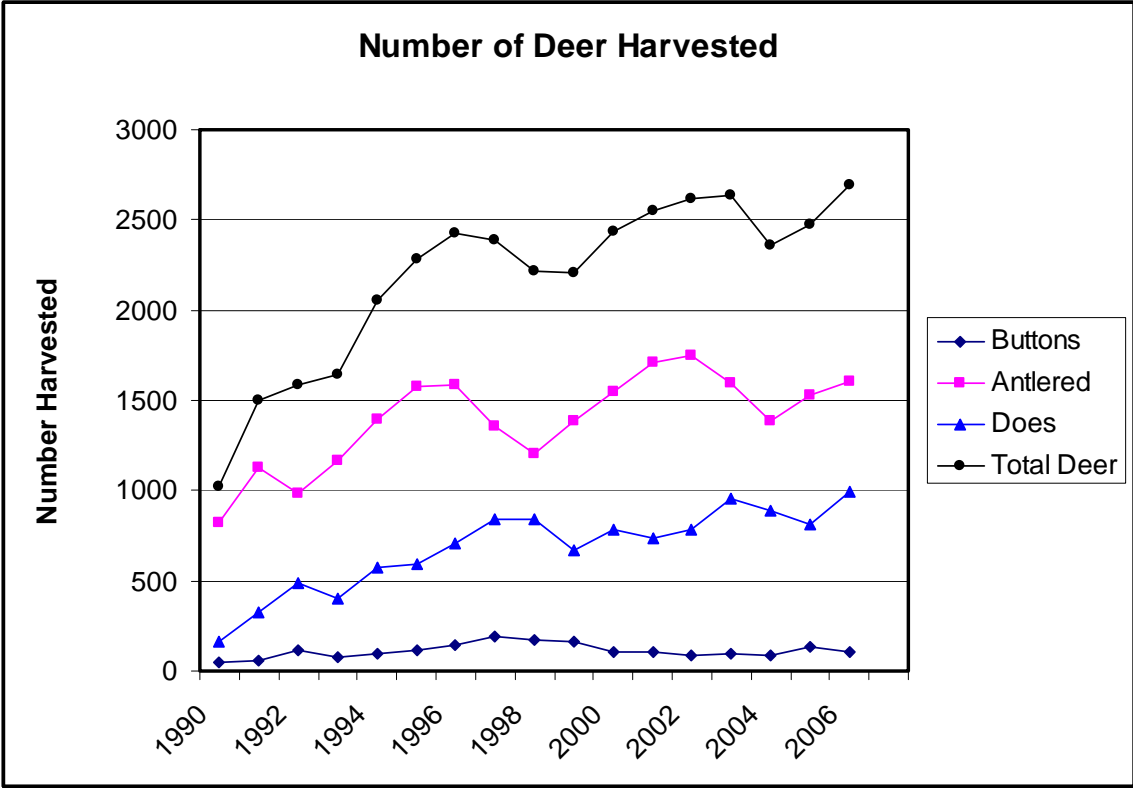
**Population Status:** Stable/Growing

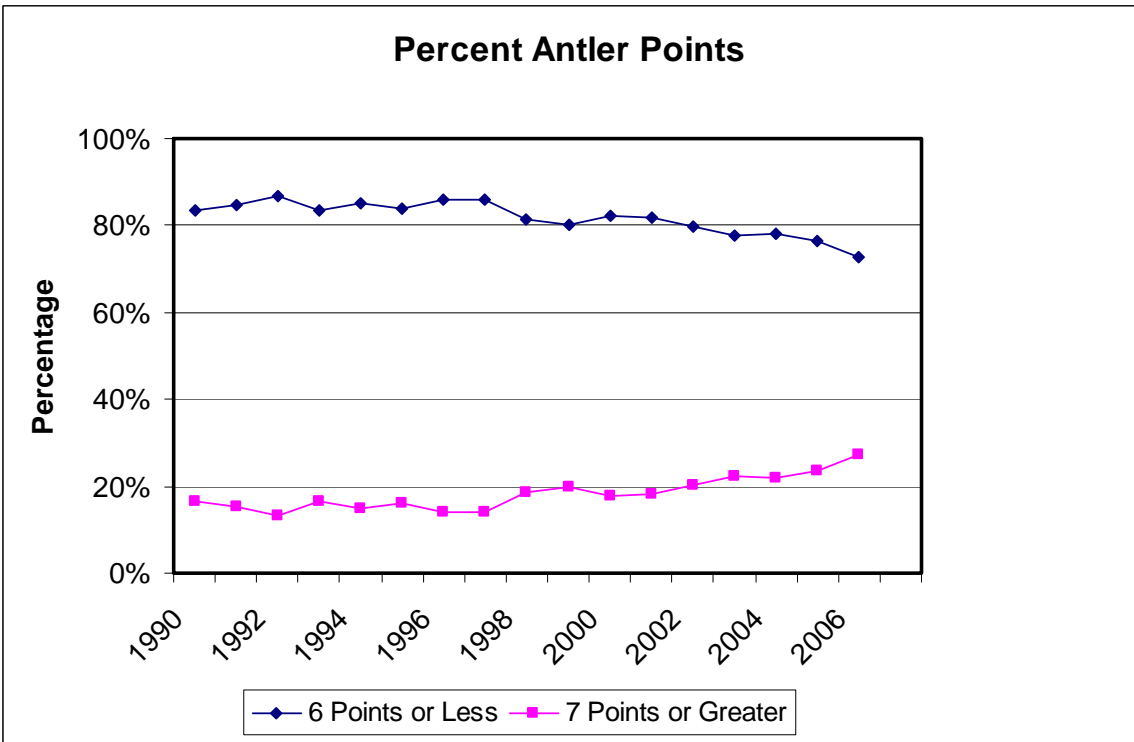
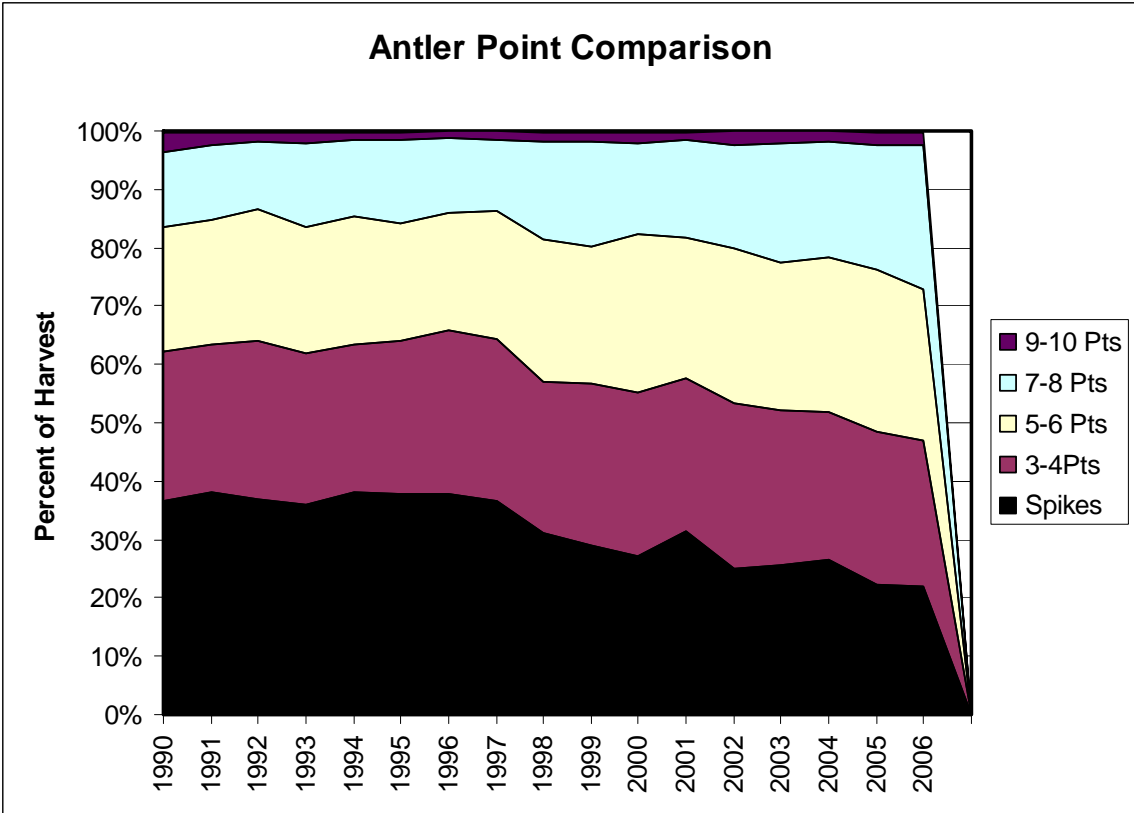
**Management Goals:**

1. Maintain population at current levels

**Notes:** Highest deer population in Region 4.

County doe harvest percentage in mid to upper 30's. Has continued to grow despite increased antlerless opportunities. Harvest was down slightly in 2004. Almost half on this decrease due to a decline in harvest during quota hunt. Decline most likely due to limited deer activity last fall due to abundant mast. Hunters may also be voluntarily limiting themselves on antlered harvest. History has shown county will rebound quickly from this decrease.





### Number of Antler Points

