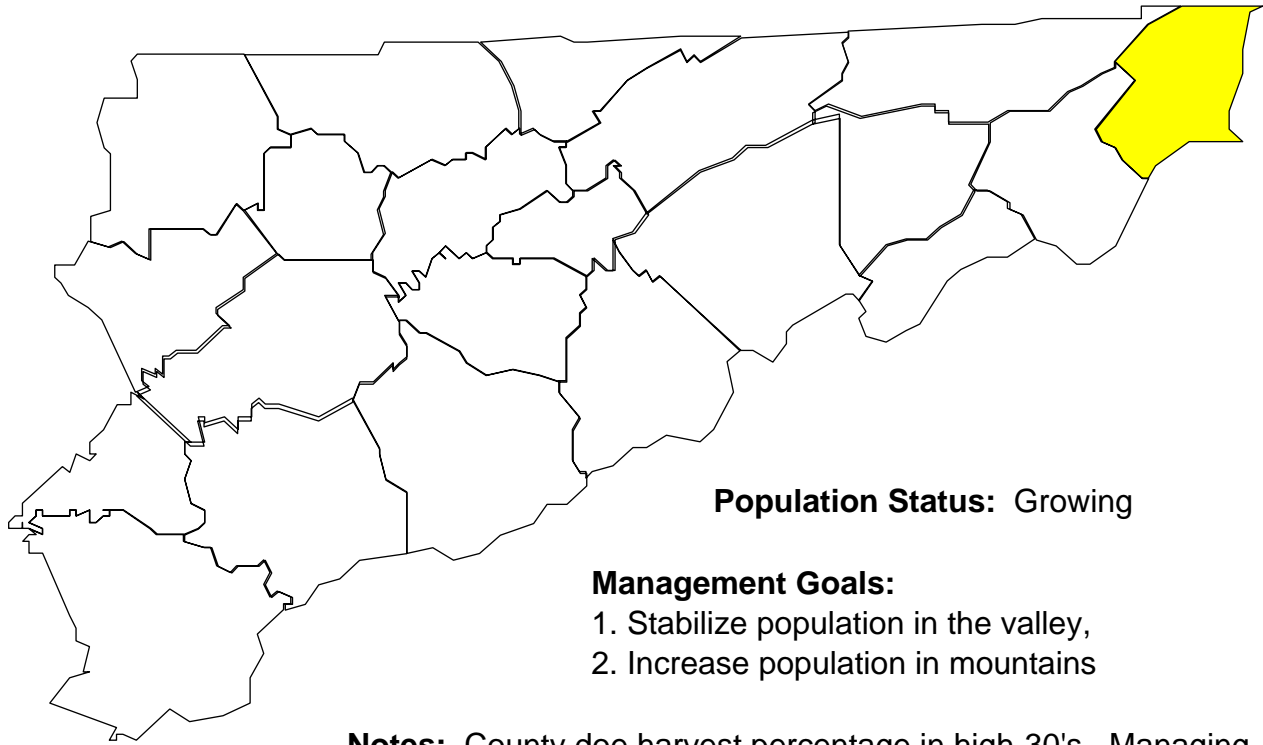
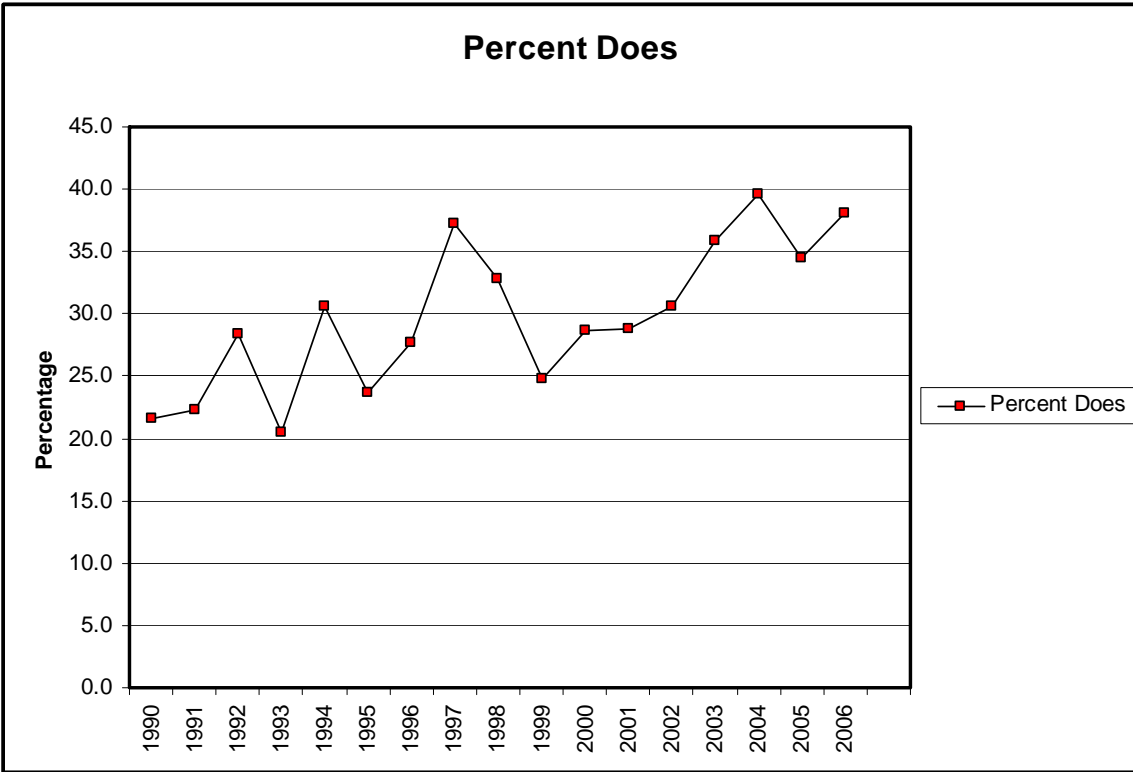
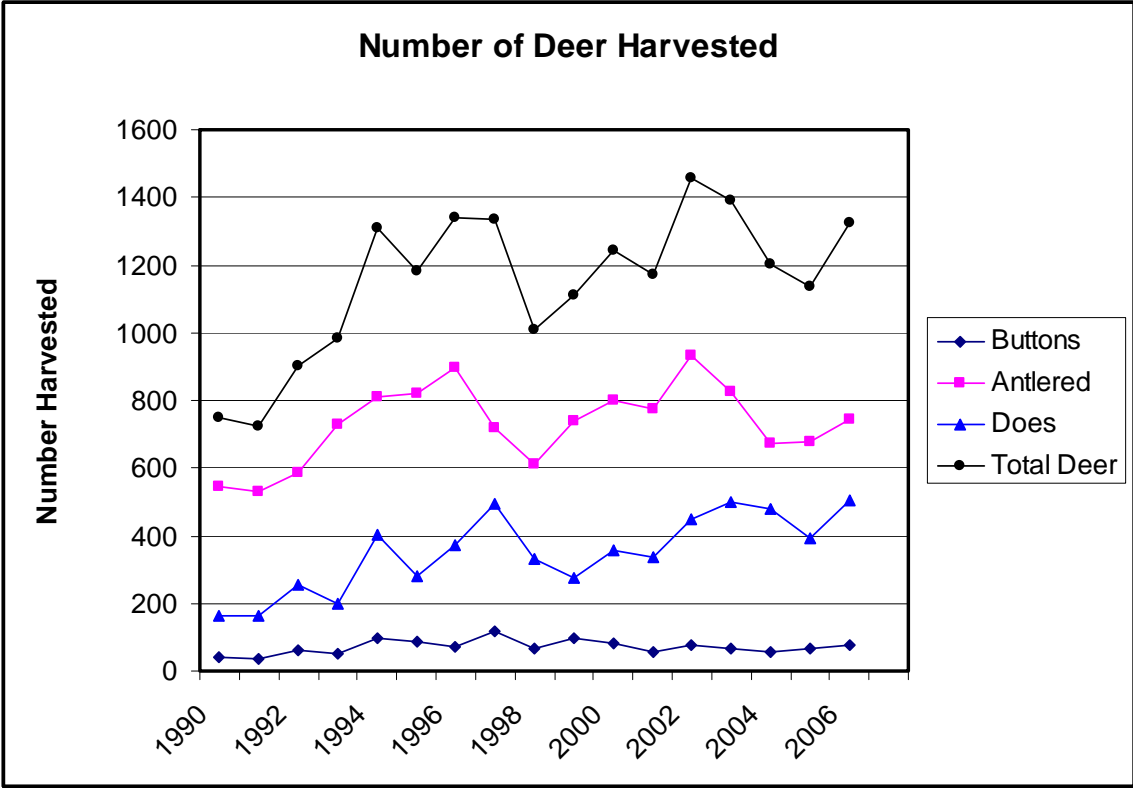


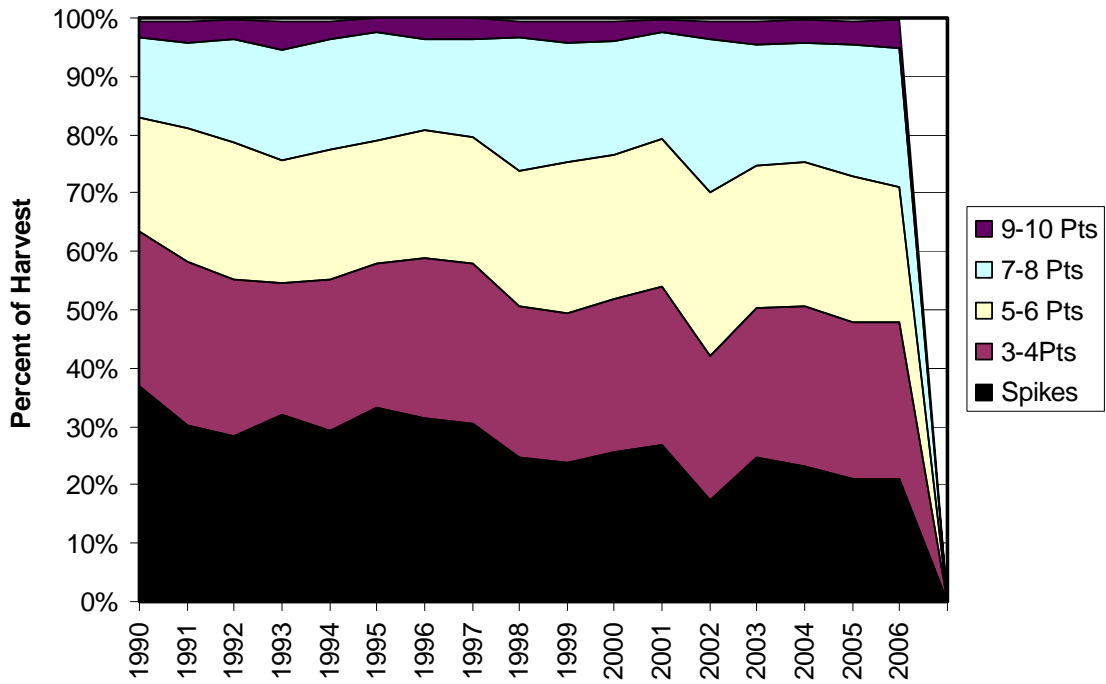
# Deer Harvests in Johnson County



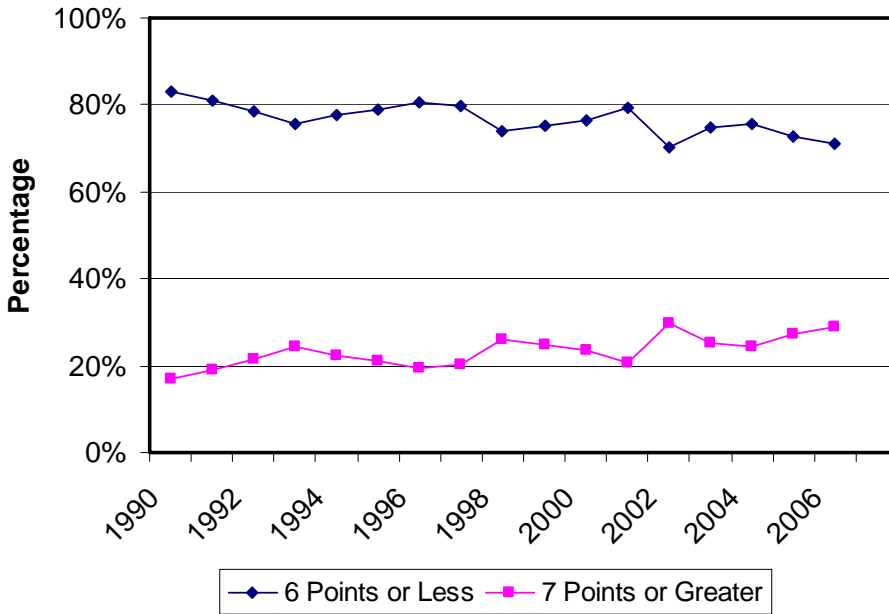
**Notes:** County doe harvest percentage in high-30's. Managing 2 populations within the county. Mountain populations declining due to habitat quality. Valley populations increasing. The quota hunt is specific to valley area due to increasing population and depredation complaints. While graphs indicate that population could be slightly decreasing, it is probably due to hunters voluntarily passing on antlered bucks. May also indicate stable valley population.



### Antler Point Comparison



### Percent Antler Points



### Number of Antler Points

