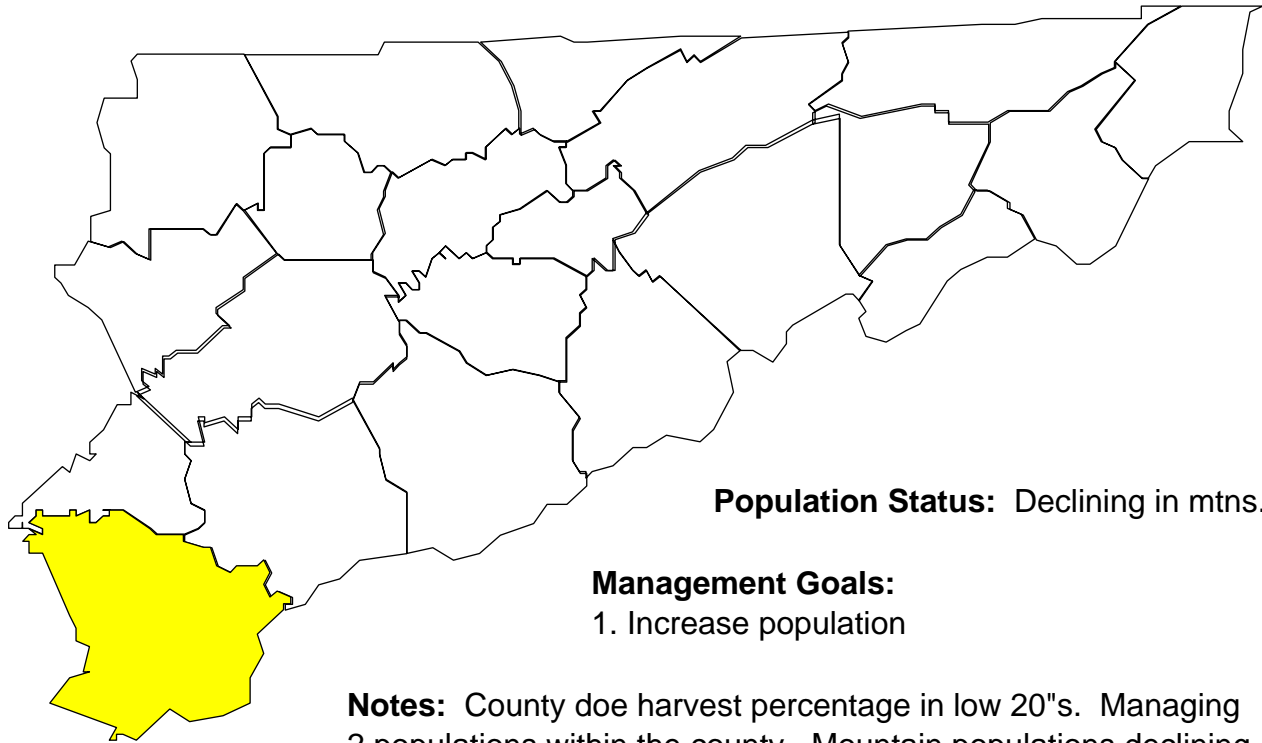


# Deer Harvests in Monroe County

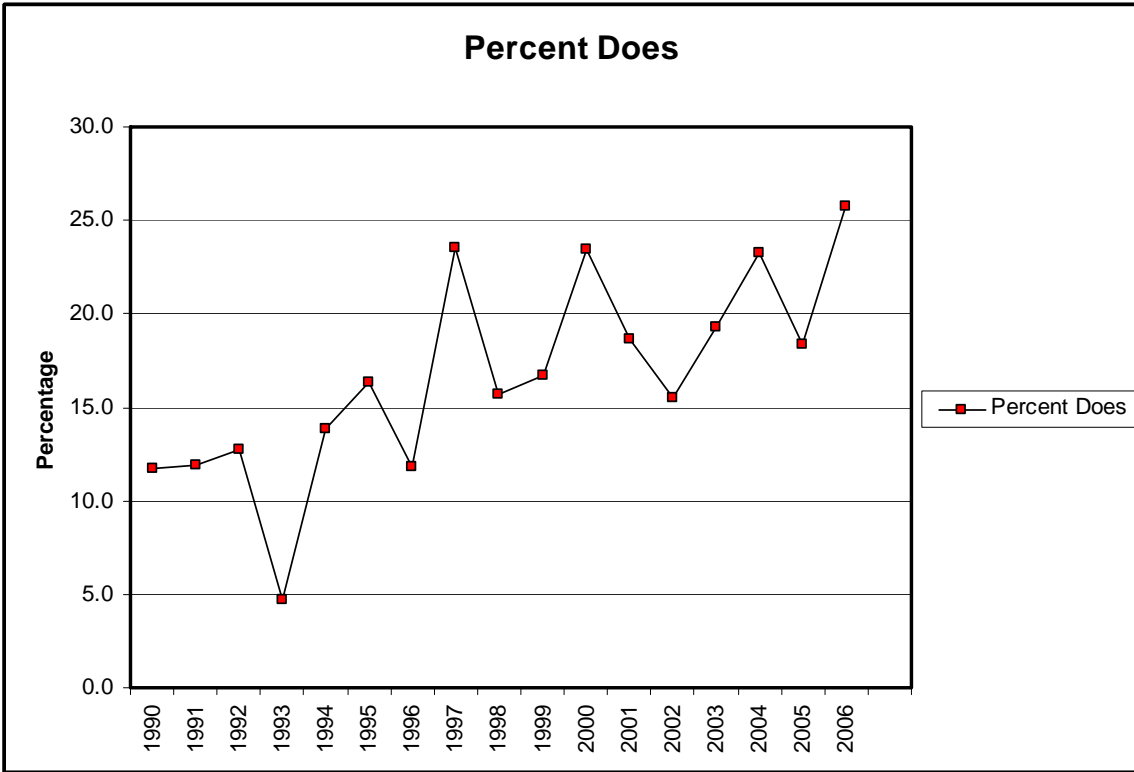
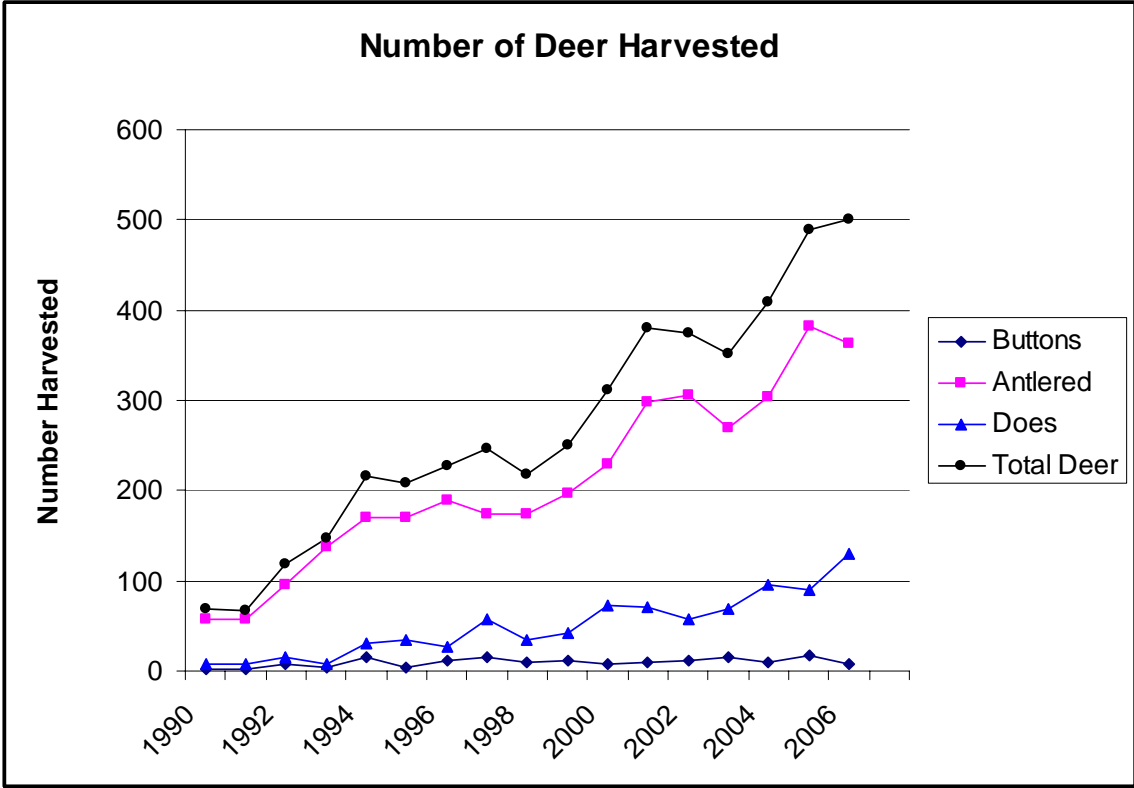


**Population Status:** Declining in mtns.

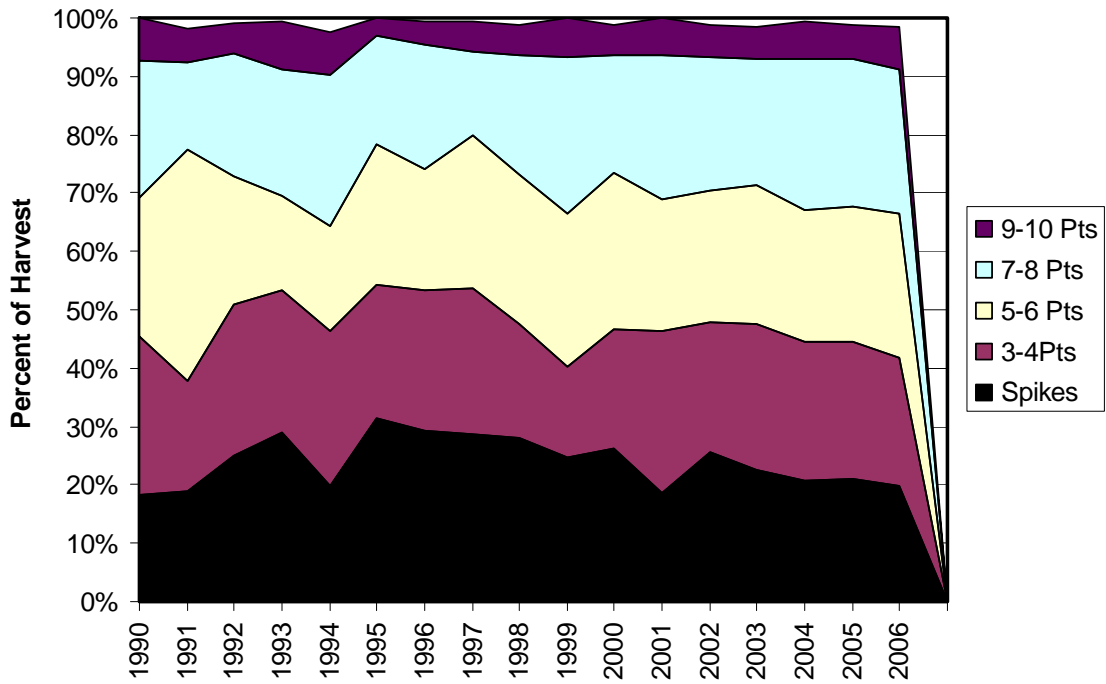
**Management Goals:**

1. Increase population

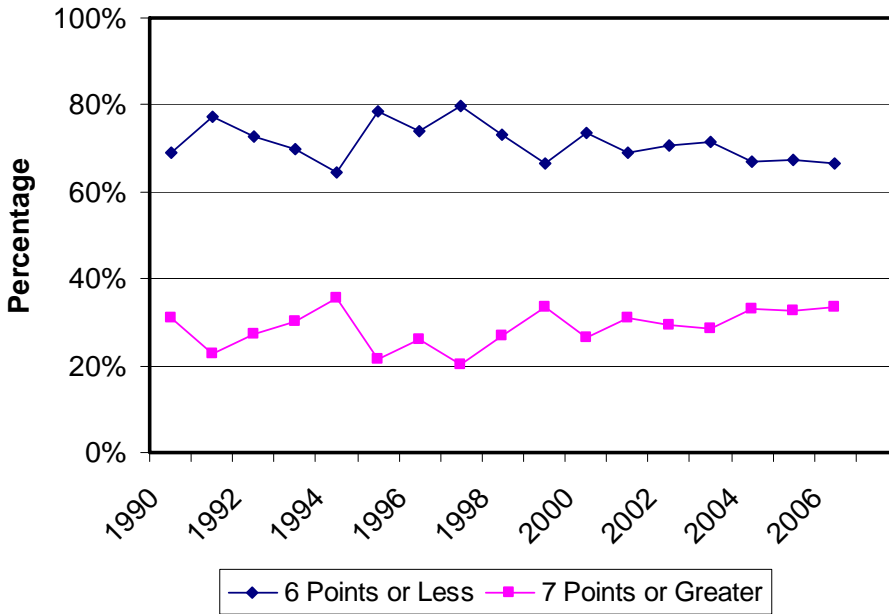
**Notes:** County doe harvest percentage in low 20's. Managing 2 populations within the county. Mountain populations declining due to habitat quality. Valley populations increasing. Harvest exceeded 400 for first time in 2004.. Increased timber harvest by the Forest Service would help this population tremendously.



### Antler Point Comparison



### Percent Antler Points



### Number of Antler Points

