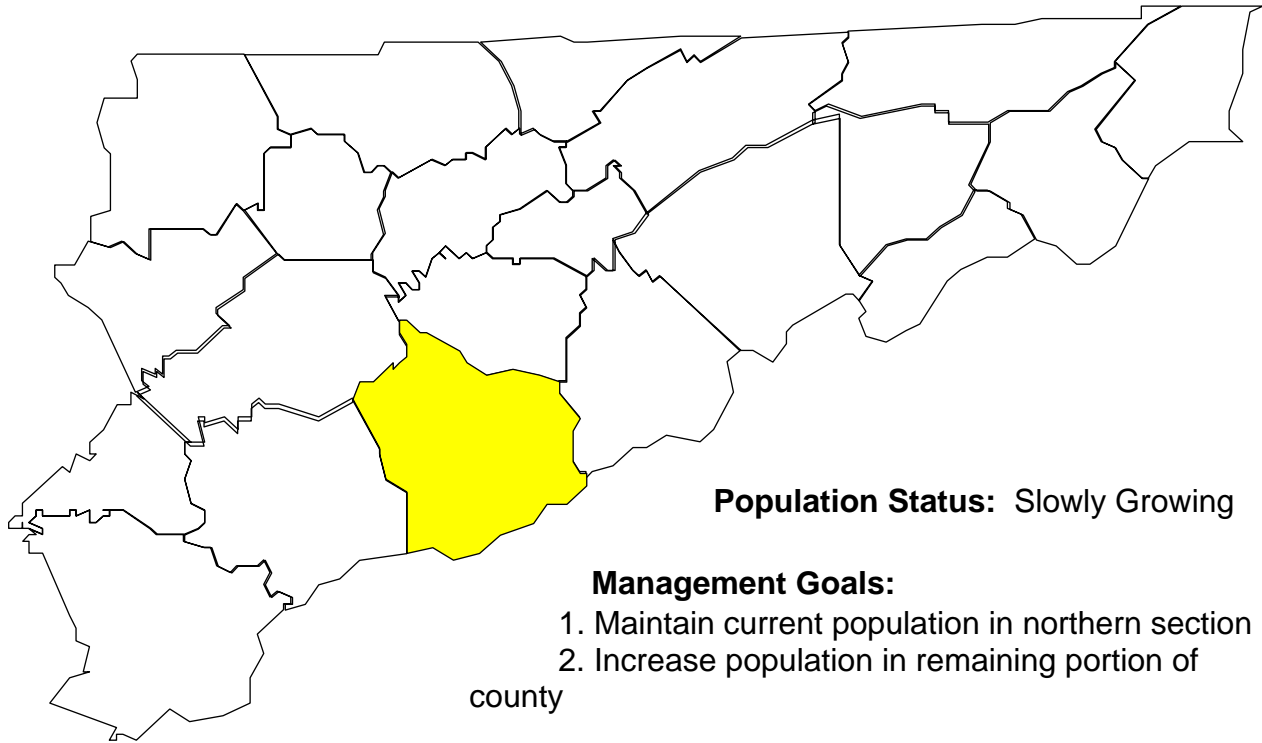


Deer Harvests in Sevier County



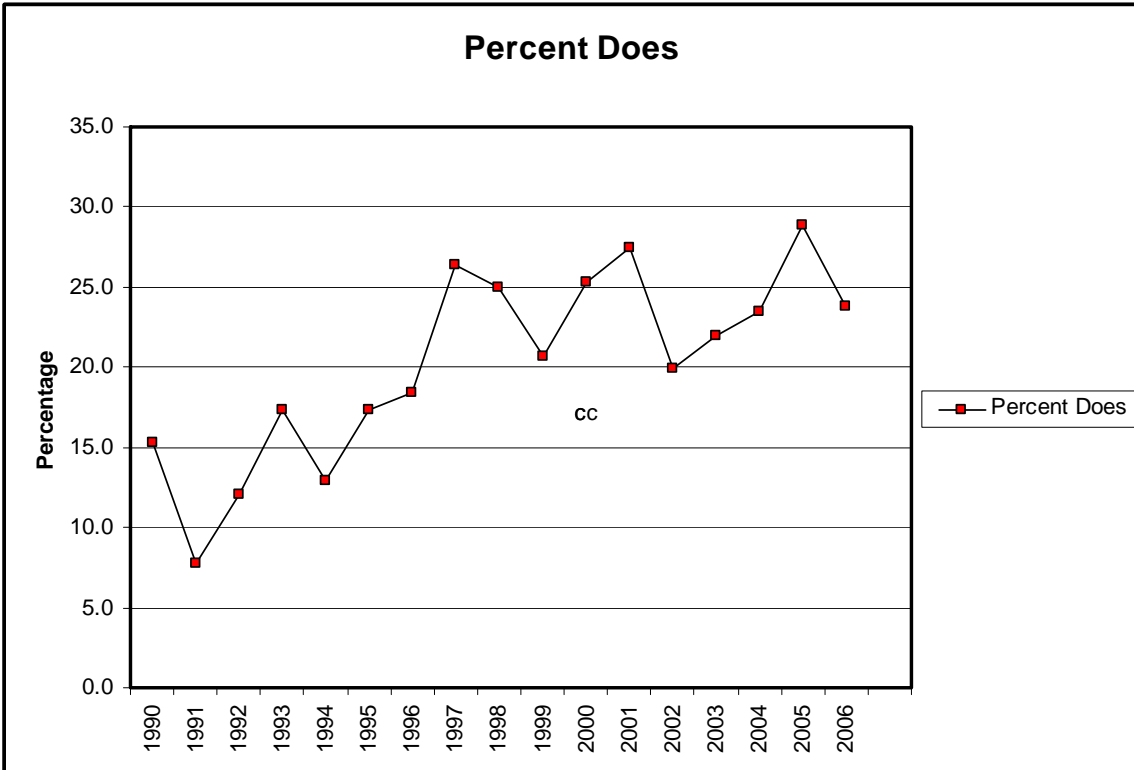
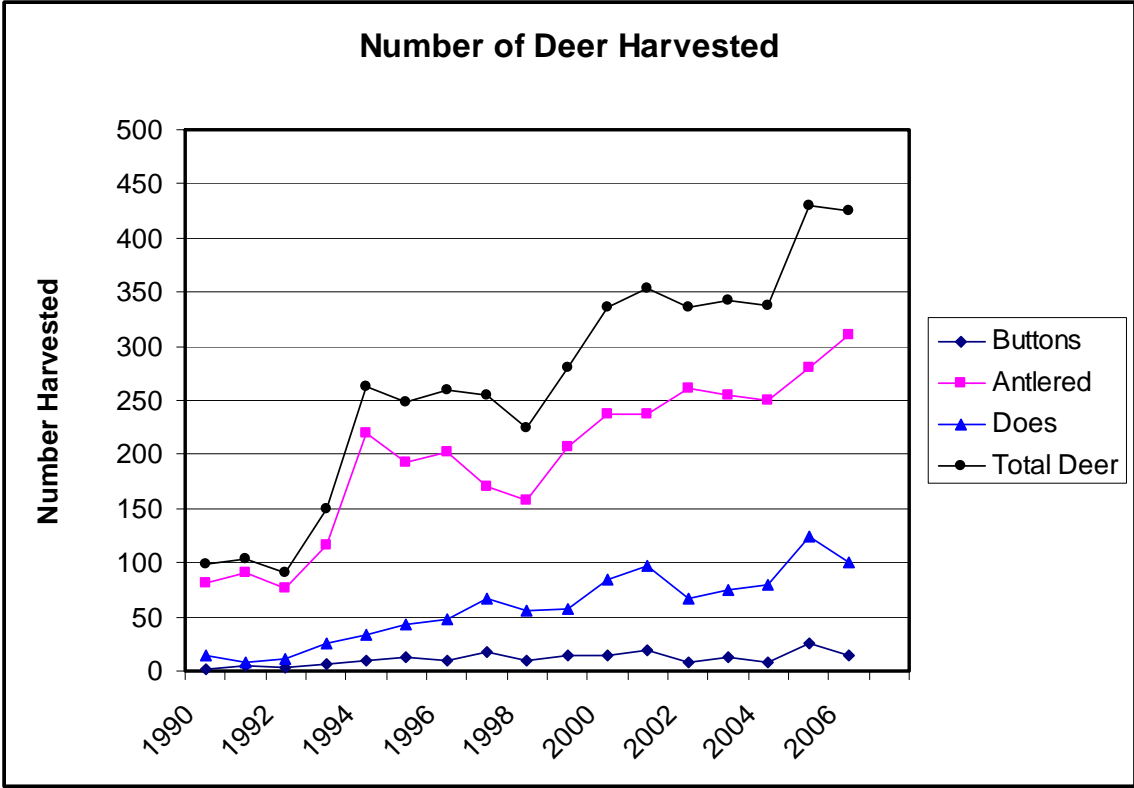
Population Status: Slowly Growing

Management Goals:

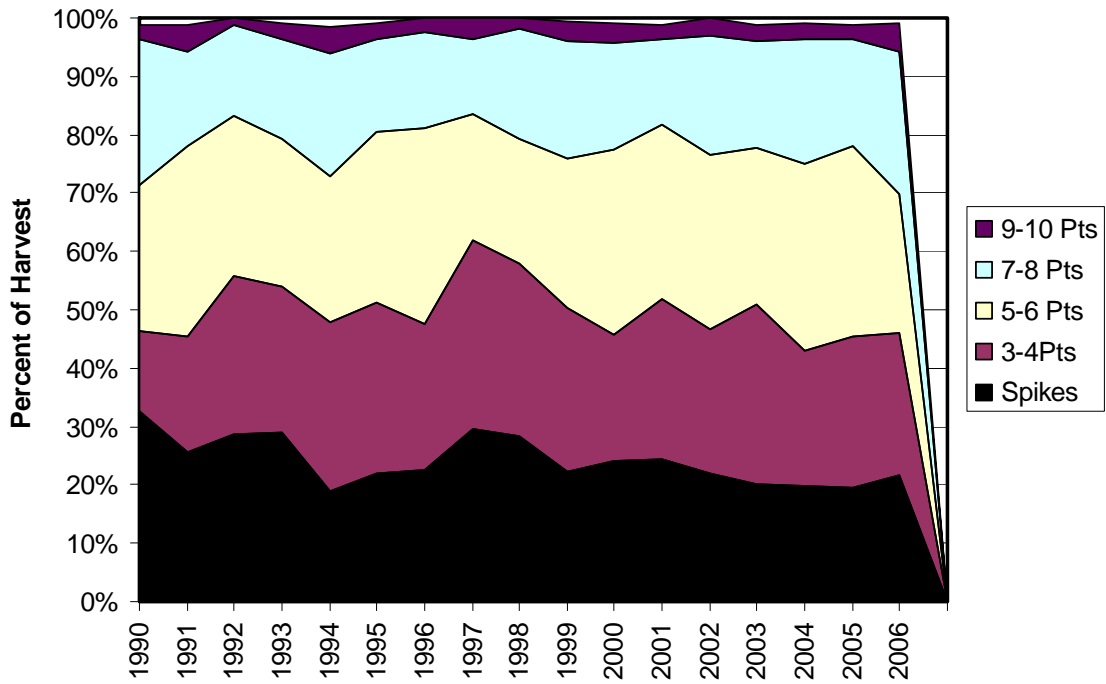
1. Maintain current population in northern section
2. Increase population in remaining portion of

county

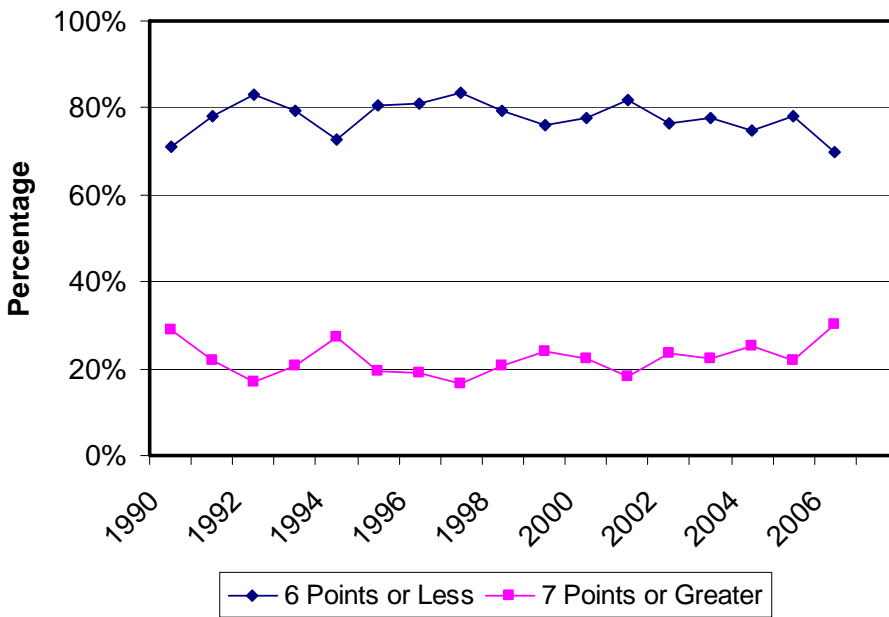
Notes: County doe harvest percentage in mid-20's. This will allow for continued growth. Approximately 50 road kill reported to S.O. in 2004. Majority of these occurred north of Hwy 411. This is a highly populated area adjacent to Knox county. Lack of hunter access in this area may be contributing to this problem. Due to this, 100 doe permits during gun season will be available for use north of Hwy 411 in 2005.



Antler Point Comparison



Percent Antler Points



Number of Antler Points

