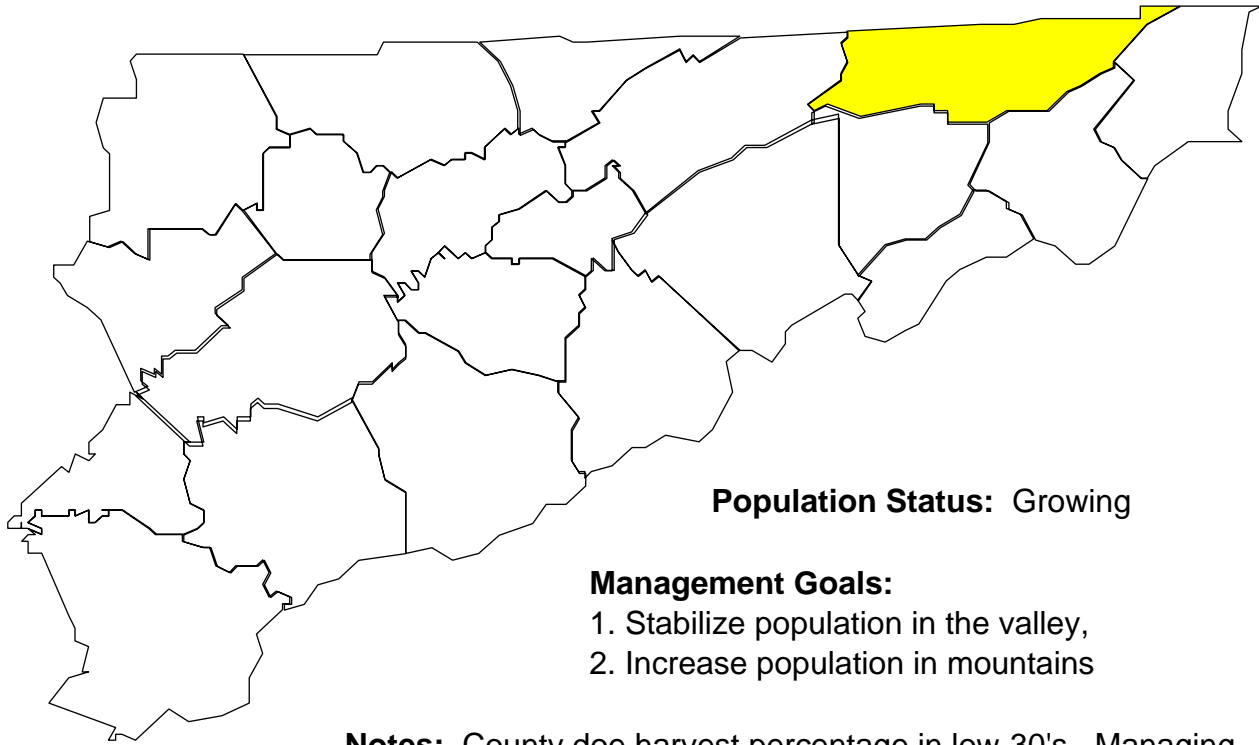


Deer Harvests in Sullivan County

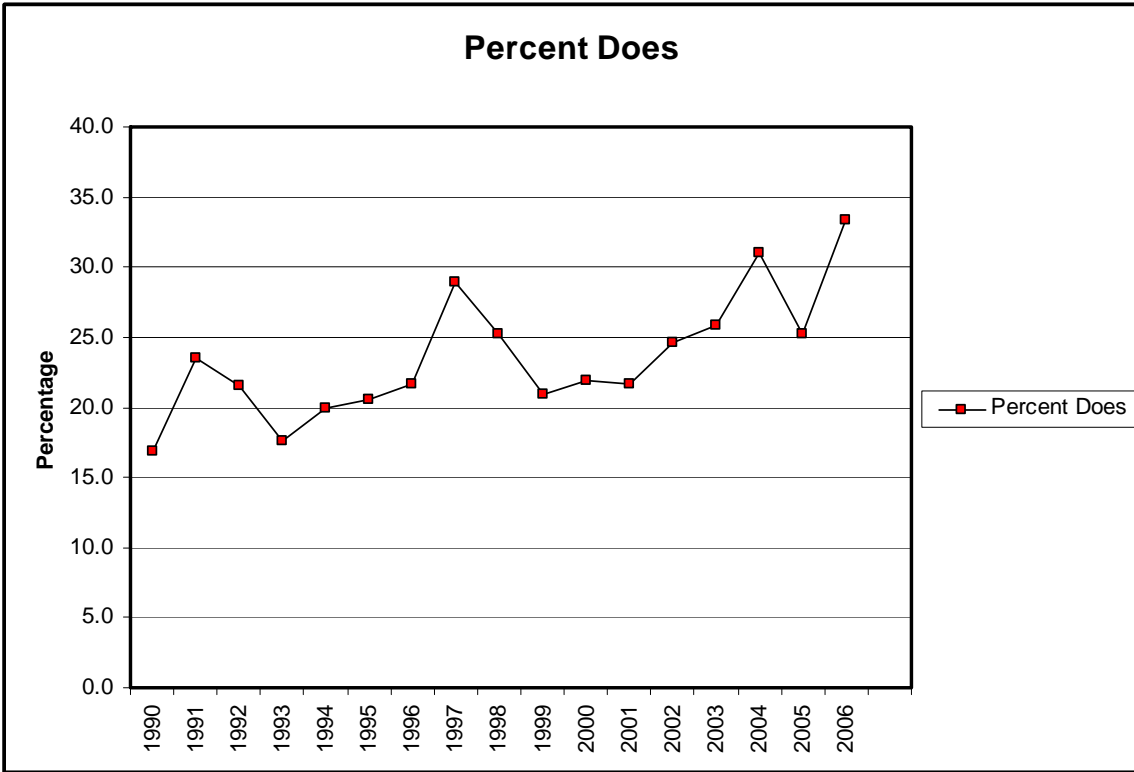
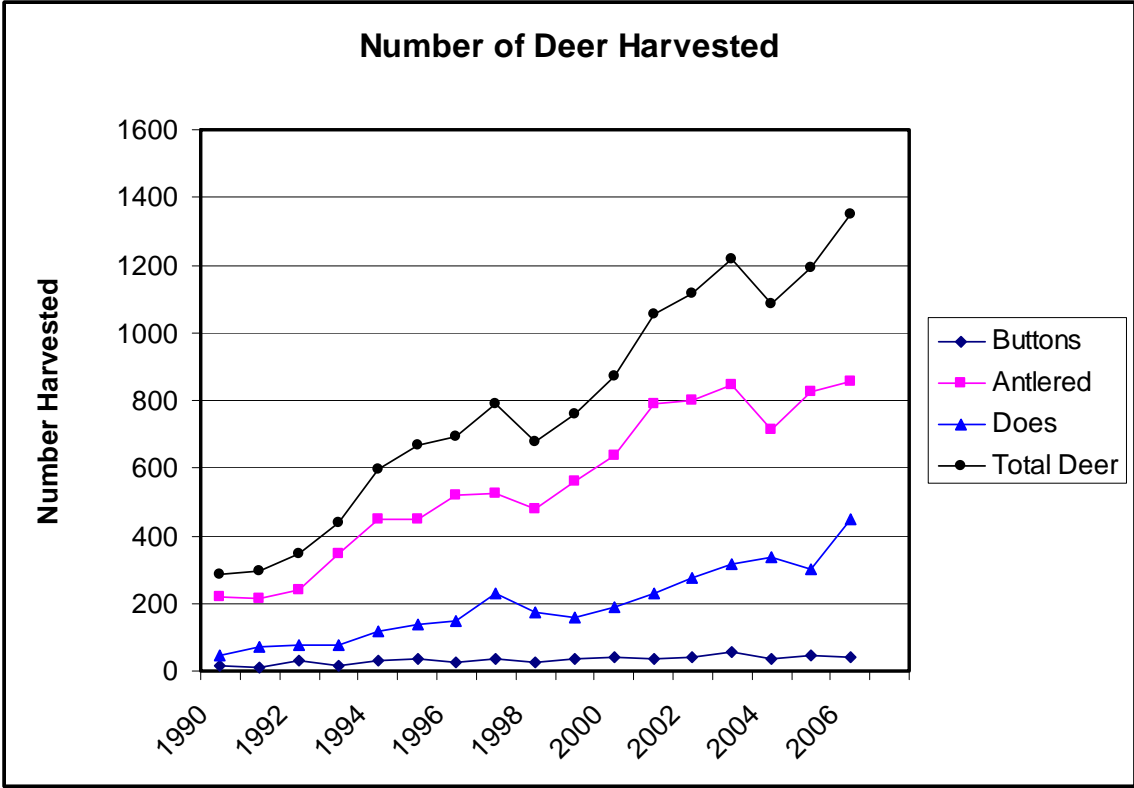


Population Status: Growing

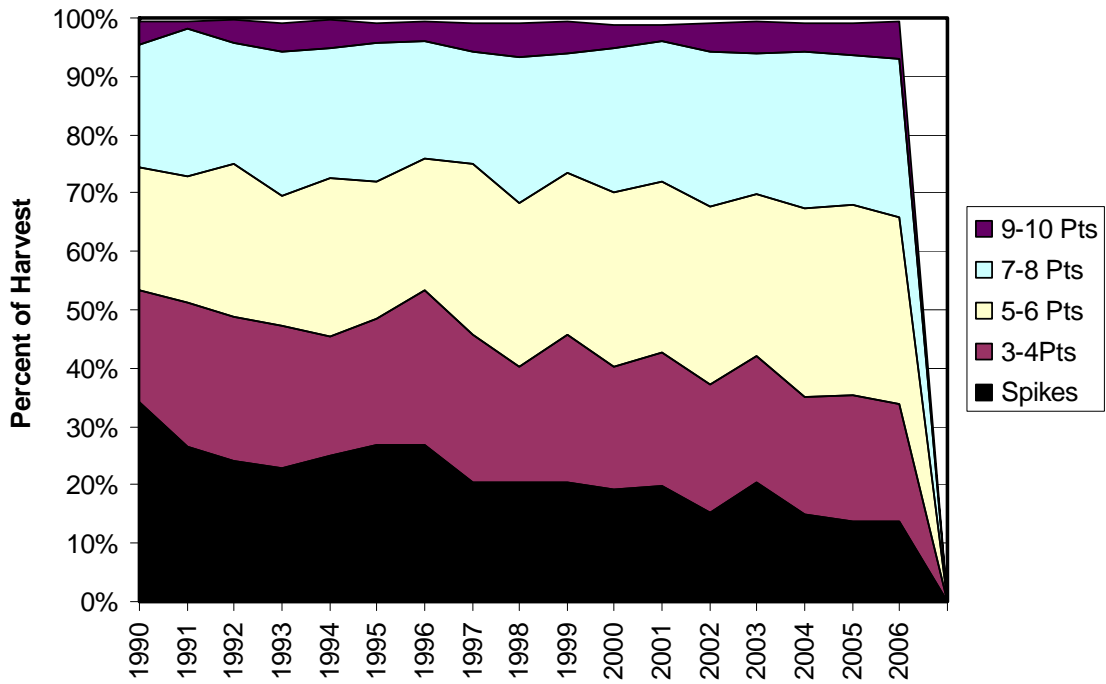
Management Goals:

1. Stabilize population in the valley,
2. Increase population in mountains

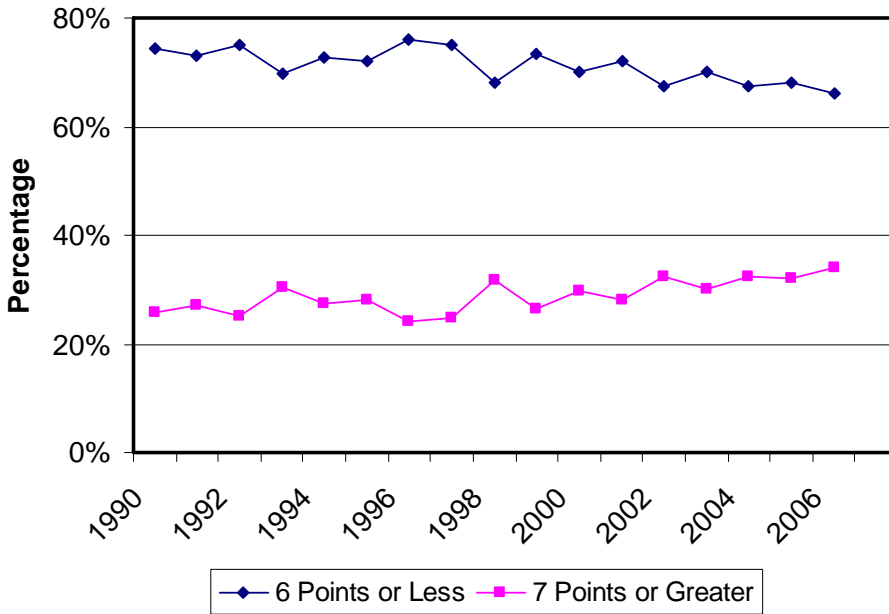
Notes: County doe harvest percentage in low-30's. Managing 2 populations within the county. Mountain populations declining due to habitat quality. Valley populations increasing. The quota hunt is specific to valley area due to increasing population and depredation complaints. Buck harvest in a decline. We will be watching closely over the next year. Buck harvest declined by 150+ in 2004.



Antler Point Comparison



Percent Antler Points



Number of Antler Points

