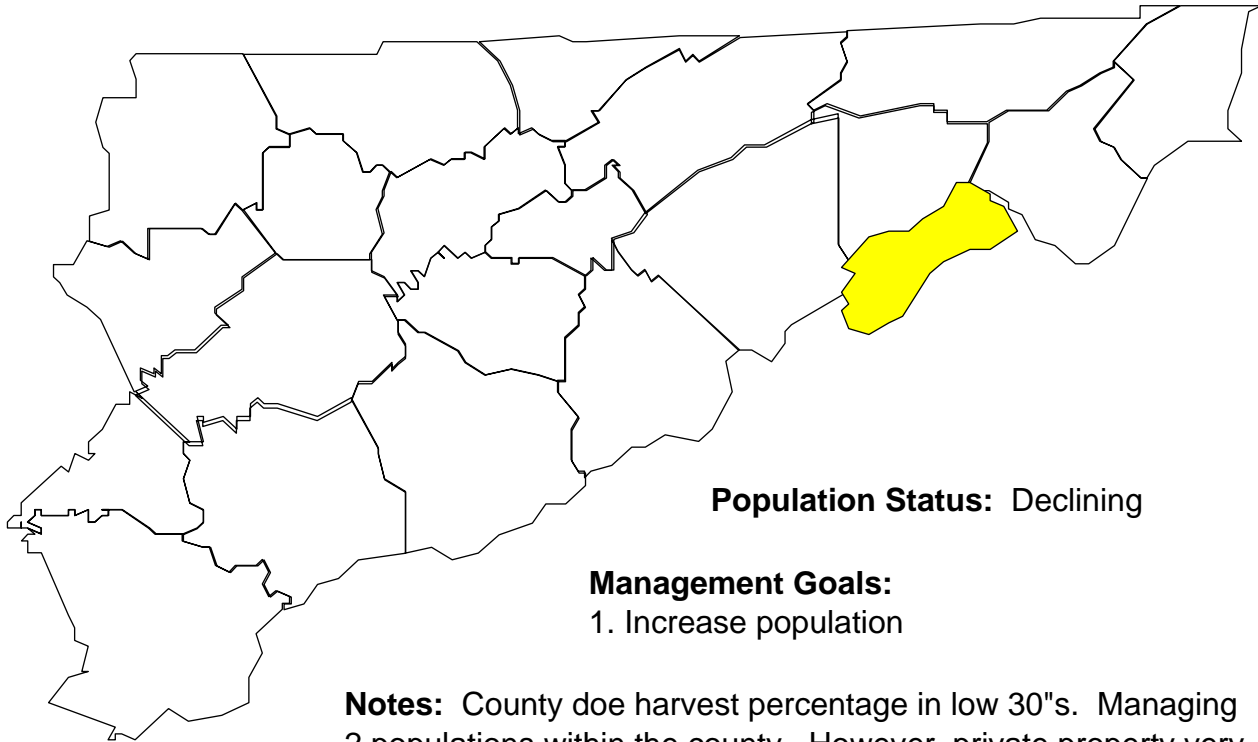


Deer Harvests in Unicoi County



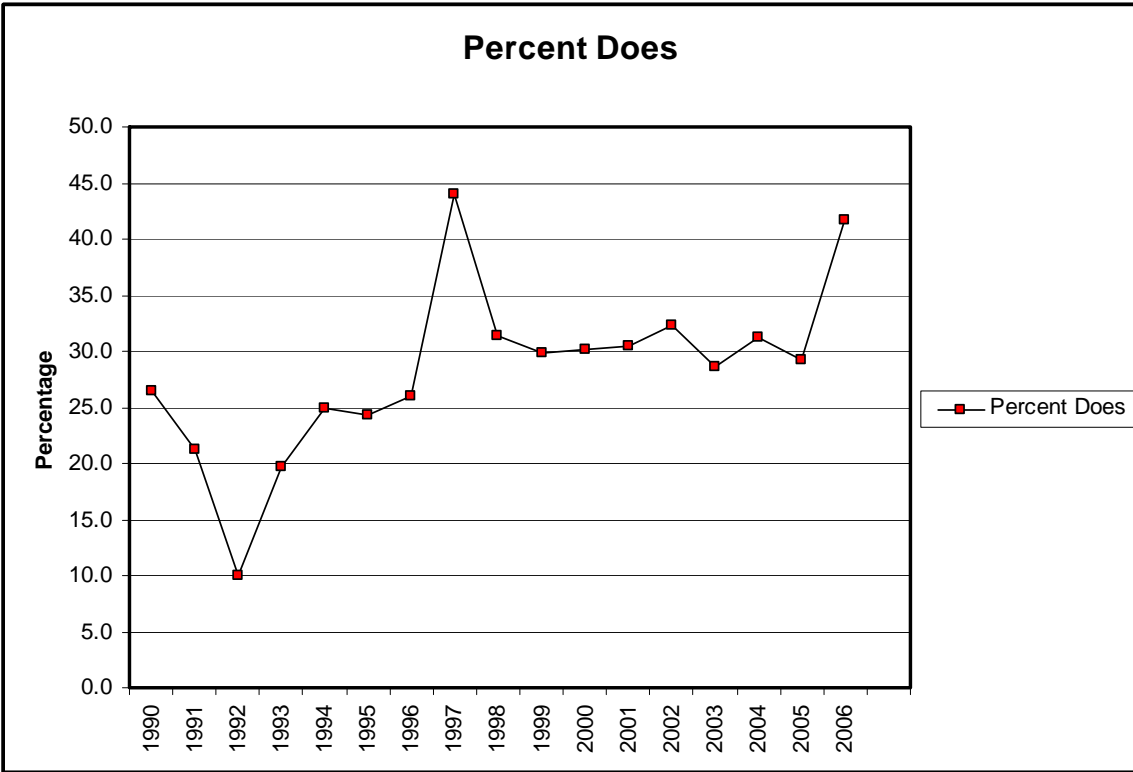
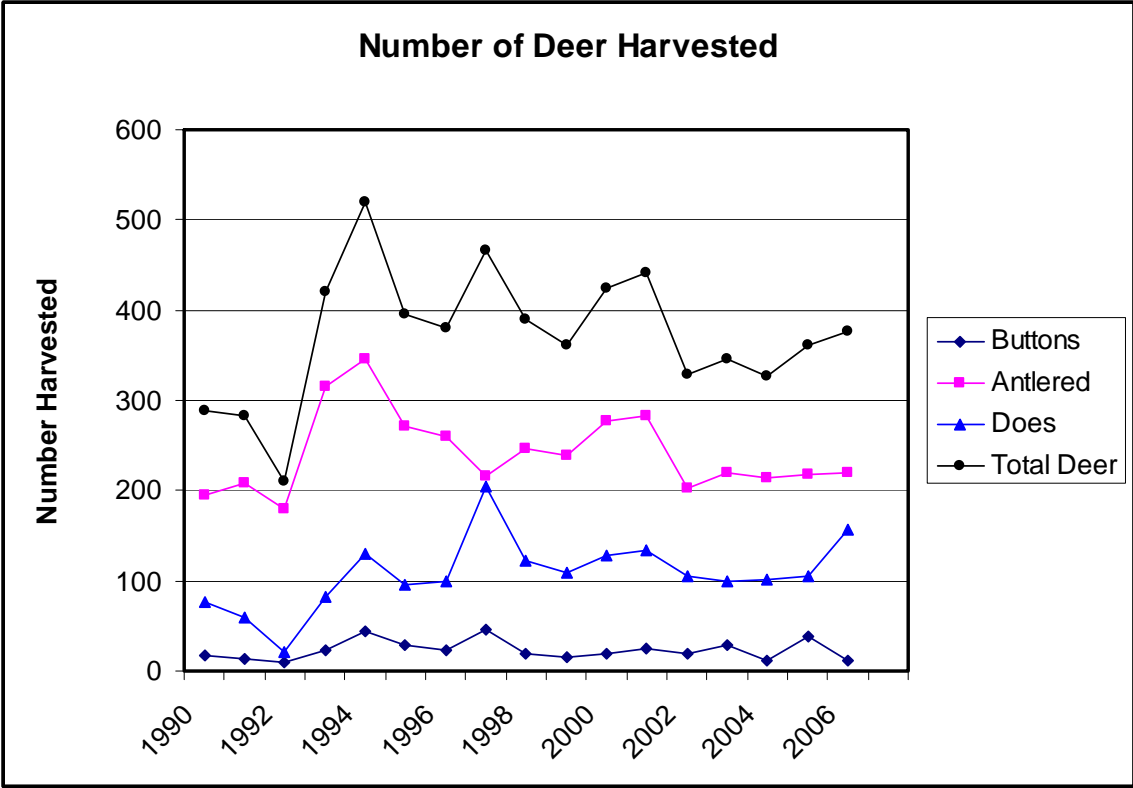
Population Status: Declining

Management Goals:

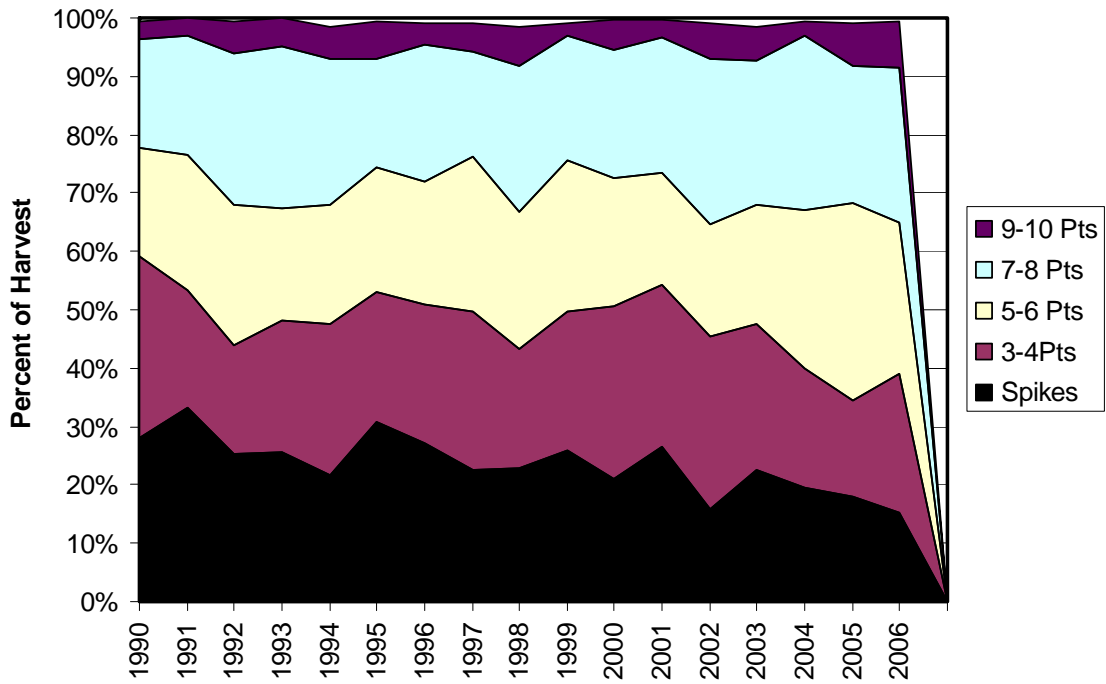
1. Increase population

Notes: County doe harvest percentage in low 30"s. Managing 2 populations within the county. However, private property very mountainous. Population has never recovered from high doe harvest (44%)

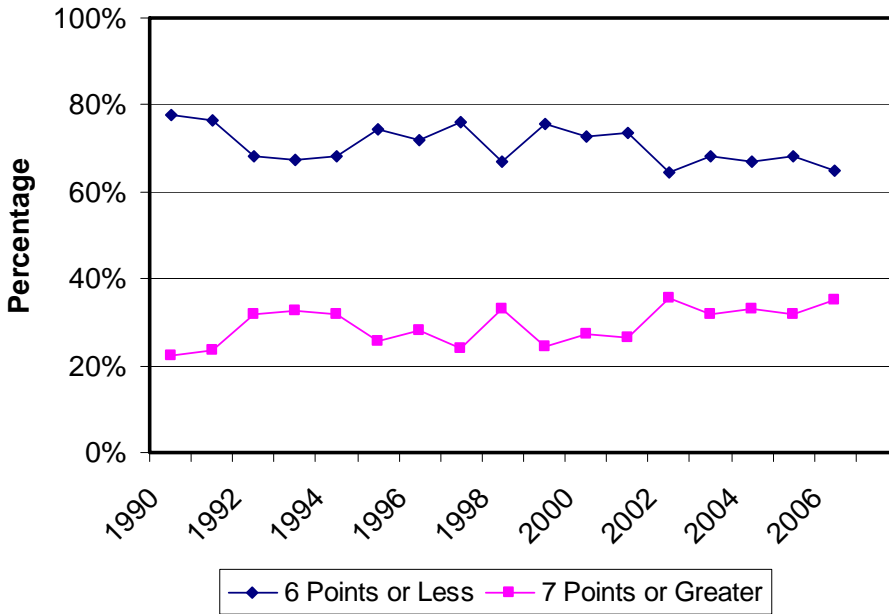
during the 1997 muzzleloader season. Increasing antlerless opportunity during archery and muzzleloader in Unit B has not helped this herd. Very little agriculture in county. Population probably most dependent in Region 4. Increased timber harvest on Cherokee Natl. Forest would help a great deal.



Antler Point Comparison



Percent Antler Points



Number of Antler Points

