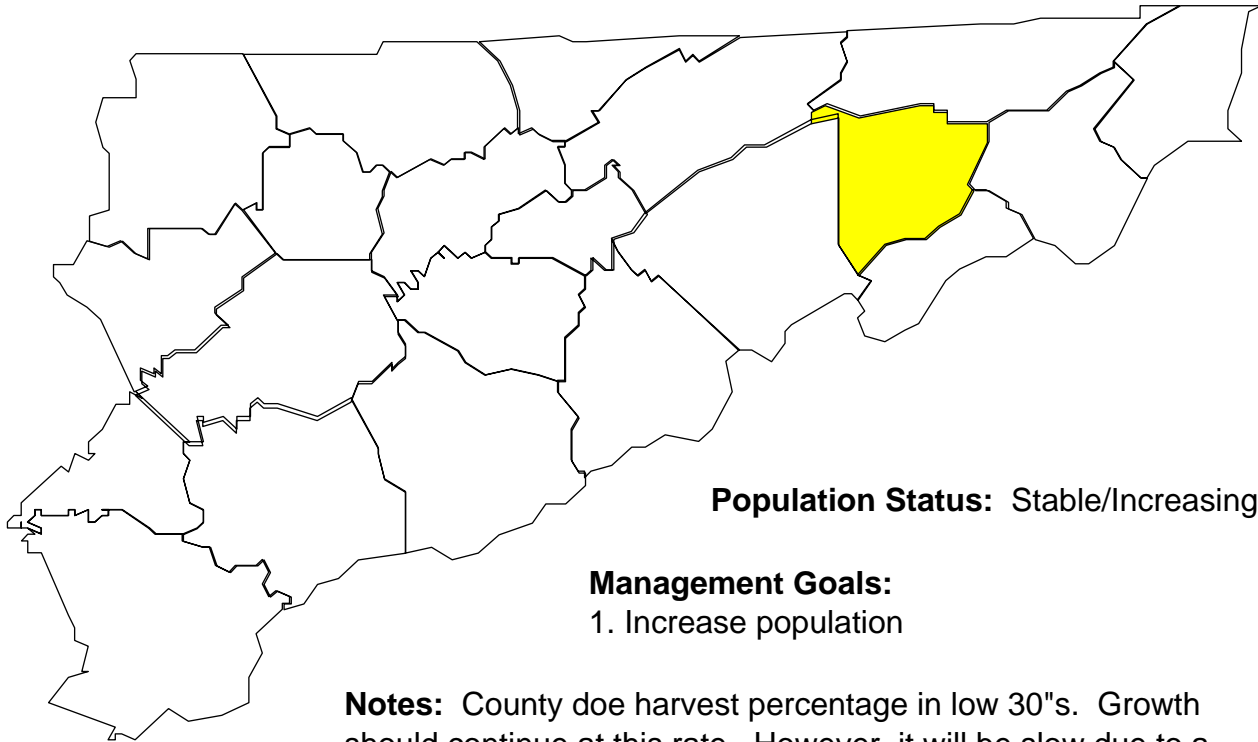


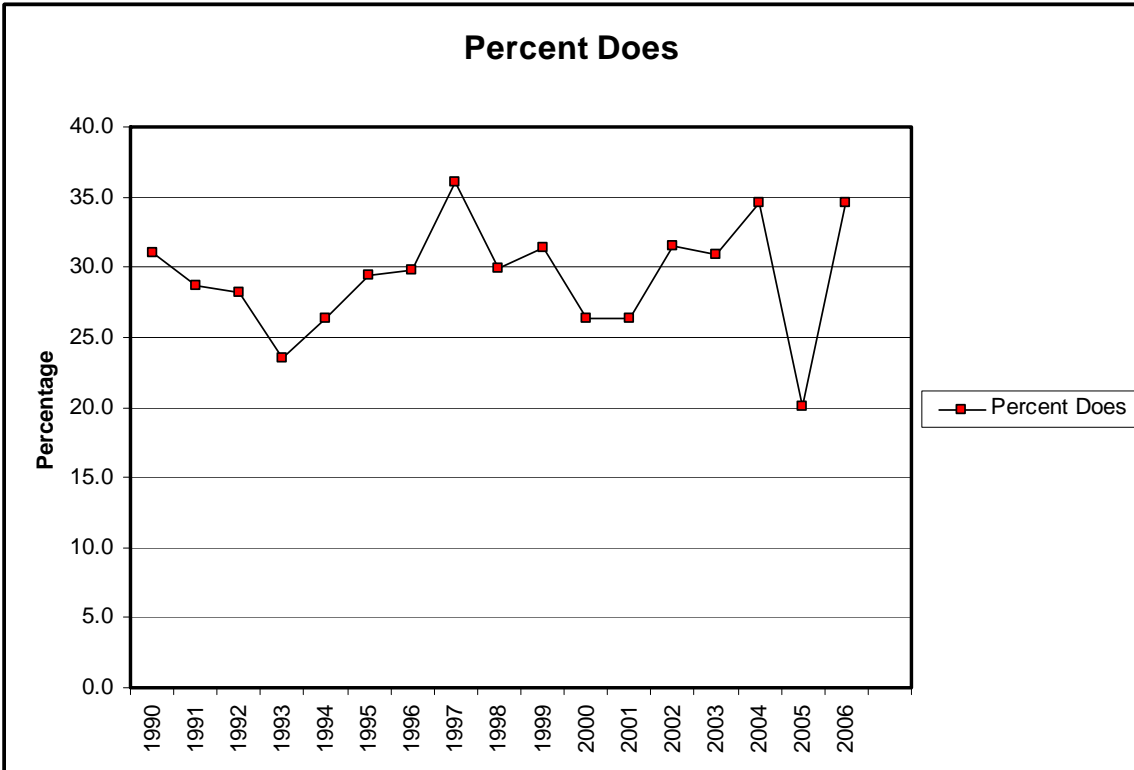
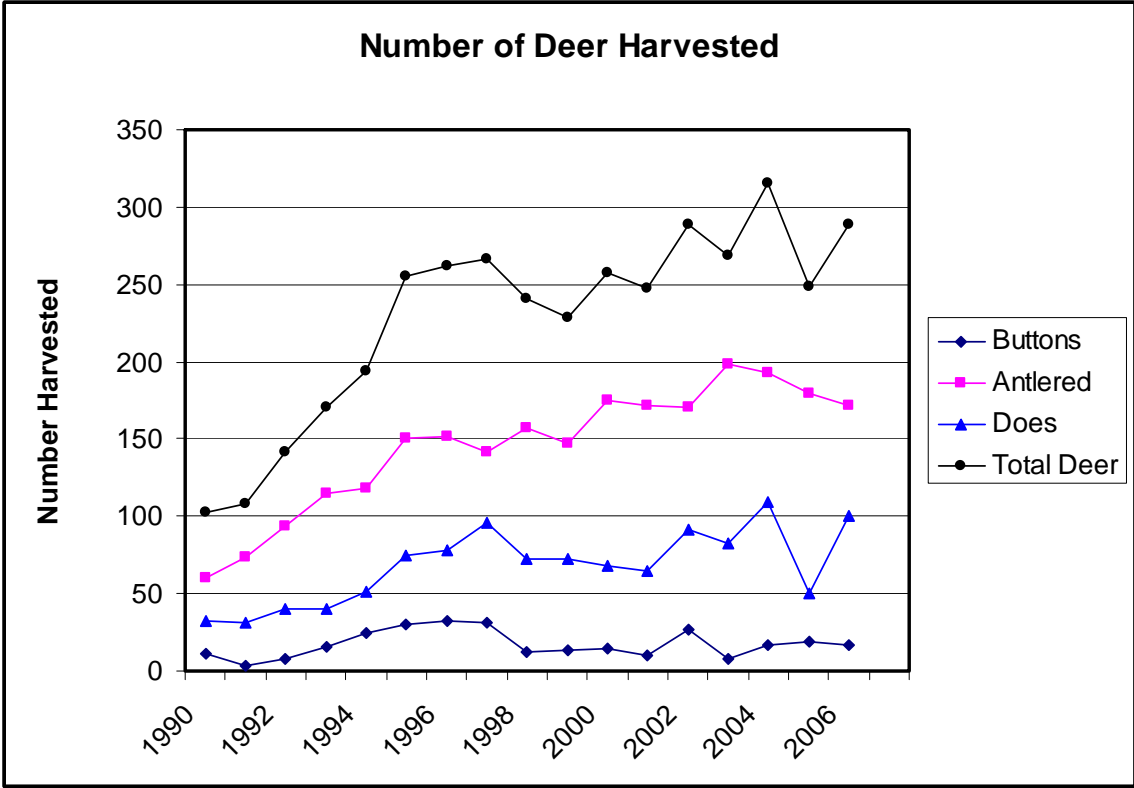
Deer Harvests in Washington County



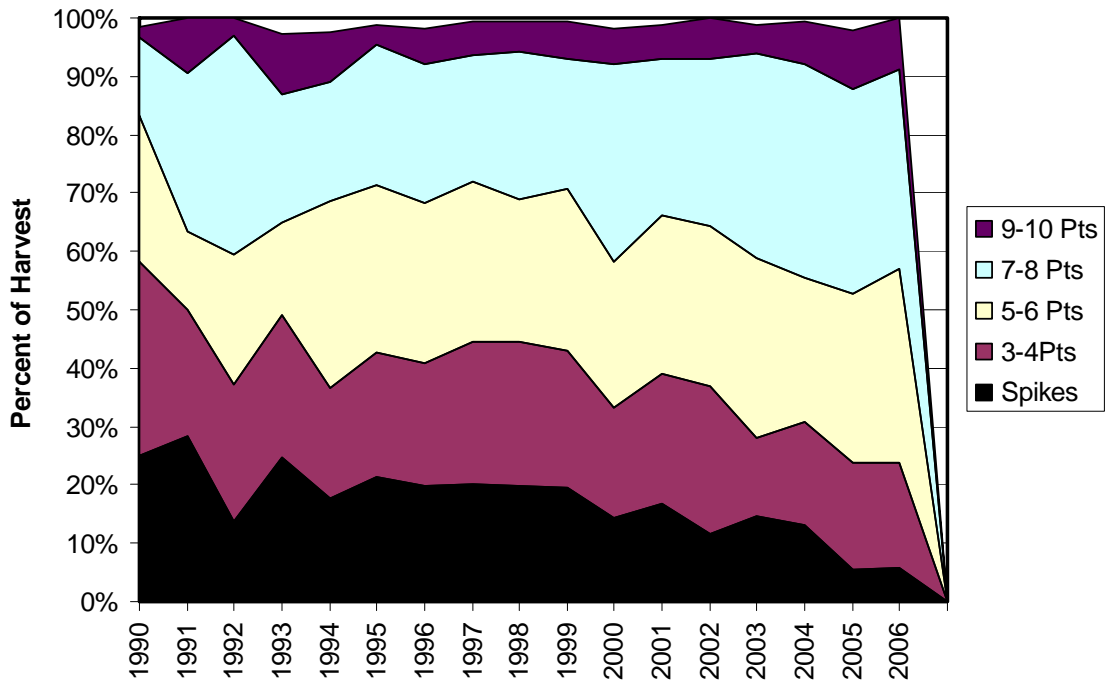
Management Goals:

1. Increase population

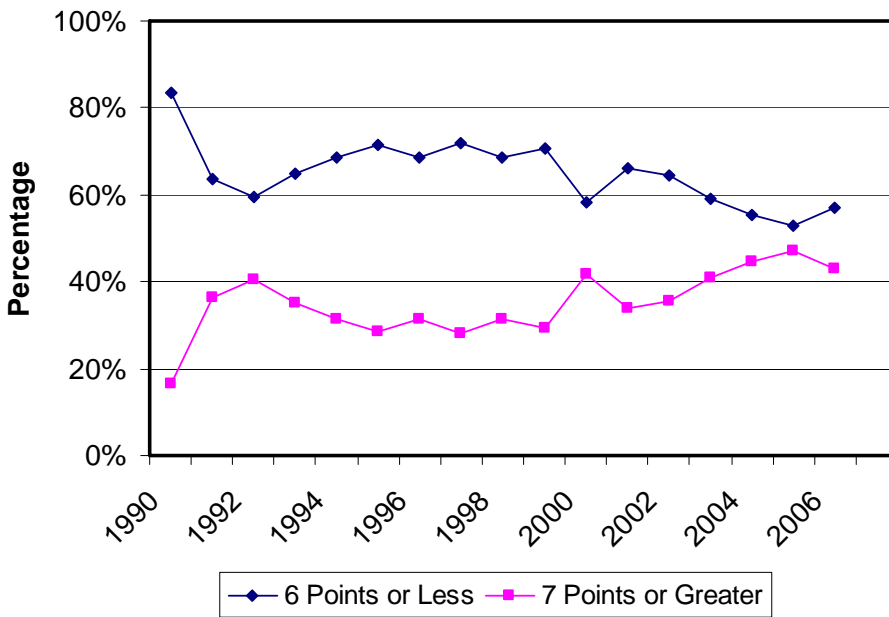
Notes: County doe harvest percentage in low 30"s. Growth should continue at this rate. However, it will be slow due to a highly fragmented habitat. A small portion of the county is comprised of Cherokee Natl. Forest. Increased timber harvest in forest would help with growth. Also, most grain crops limited to western portion of county. (Tomatoes are the primary crop grown on the fertile bottoms of the Nolichucky River.)



Antler Point Comparison



Percent Antler Points



Number of Antler Points

